



SATELLITE

S2

S2 is a simple, robust and reliable satellite for decentral cleaning.

A new and upgraded version of the legendary S30, the satellite which has been part of System Cleaners' product range for many years.

It is connected to pressurised water from a System Cleaners main station or pump station and operated with a mechanical selector switch

It can rinse, foam and disinfect, and works within the range of 3-40 bar.

HIGHLIGHTS

- Easy to service
- Hygienic design
- High quality materials
- Great operational reliability
- Designed and built according to System Cleaners' renowned principles of simple operation, robust construction and exceptional reliability.

VARIANTS

S2 is available as wall model as well as trolley model.

TECHNICAL SPECIFICATIONS



FOAM

Flow	150 l/min
Dosage **	0.2-6%

DISINFECTION

Flow	7 l/min
Dosage **	0.2-6%

NOZZLES

Standard for rinse	15/30
Standard for foam	50/200
Standard for disinfection	60/30

DIMENSIONS

Height	486 mm
Width	336mm
Depth	149 mm
Weight	10 kg

WALL MODEL

TROLLEY MODEL

Height	1,126 mm
Width	589 mm
Depth	501 mm
Weight	18 kg

Please note : Requirements when units are in service:

WATER SUPPLY

Connection	external thread ½" BSP
Max. temperature	70° C
Min. flow	30 litres/minute
Max. pressure	40 bar

AIR SUPPLY

Connection	ø 6
Min. pressure	5 bar
Max. pressure	10 bar
Min. flow	150 litres/minute

** Depending on product, temperature, viscosity, density and conditions for pressure.

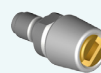
STANDARD TOOLS DELIVERED WITH A S2



Rinsing nozzle BR15/30
53-015301



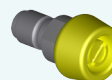
Nozzle holder
57-000050



Foam nozzle BR50/200
53-502000



Strainer ½" BR
(only available for 3-15 bar)
20-500061



Disinfection nozzle KS60/30*
52-160300
(*if separate D-injector is selected)