



Washdown Hygiene
& Cleaning Equipment

Foreword

Kersia has supplied dispense and application systems to the Food, Beverage, Dairy, Catering, Hospitality and Retail Industries for over 35 years. Projects have been implemented in various locations across the UK and Ireland and have ranged in size from small local dispense systems to integrated storage, dispense and application systems fitted within large production facilities.

Our team has the expertise and experience to ensure your enquiry will be dealt with efficiently, delivering a hassle free solution.

At Kersia, we fully understand the pressures facing businesses and our team of technical experts will advise on how best to optimise existing systems as well as providing information on end to end solutions on a new system.

Kersia work to the following standards:

- ISO 9001:2015 throughout their operation
- ISO 14001:2015 Environmental Management System
- ISO 45001:2018 Occupational Health & Safety Management System
- Safe Contractor Scheme Accreditation
- Safe Pass Alliance (SPA) Passport Scheme (inclusive of Food and Beverage section).

Our in house team of qualified service engineers provide their expertise throughout the UK and Ireland in dosing and application equipment. In addition to the routine planned service visits, they also provide a speedy response to breakdowns and can provide an advisory and investigative service.

To complete the whole engineering solution and achieve the desired standards of hygiene and health & safety requirements, we also supply a range of washdown and cleaning accessories, which have been specially selected for quality, reliability and are offered at very competitive prices.

Please visit our website for the latest prices and products at :
www.kersia.uk/shop



Contents

Page 1	Low Pressure Cleaning Accessories
Page 5	Medium Pressure Cleaning Accessories
Page 9	System Cleaners Modular Equipment
Page 16	Boons Fis Modular Equipment
Page 17	Stainless Steel Pipework Fittings
Page 18	Foam Application Equipment
Page 20	Spraying & Fogging Equipment
Page 22	Dilute Chemical Dispensing Equipment
Page 29	Neat Chemical Dispensing Equipment
Page 35	High Pressure Cleaning Accessories
Page 40	Chemical Containment Units & Spill Kits
Page 45	Chemical Storage Units
Page 48	Hose Reels, Hose Hangers, Trolleys & Keg Racks
Page 50	Hand Hygiene Dispensers

How To Order

Phone: 01706 238520

Email: engineeringsales@kersia-group.com

Web: www.kersia.uk/shop/

Delivery

Wherever possible, goods will be despatched for next day delivery on orders received prior to 2.00pm

For full terms and conditions please visit the Kersia website

Low Pressure Cleaning Accessories

Washdown Guns



Description	Order Code
Heavy Duty Water Gun Blue	SKS01051
Heavy Duty Water Gun Red	SKS01051/02

These guns are enclosed in a robust non-marking rubber cover. The trigger provides a progressive change in spray pattern from wide cone to narrow jet.

1/2" BSP female inlet connection.	
Max Pressure:	362 psi (25 bar)
Max Temp:	80°C (176°F)
Max Flow:	55 litres/min (12 gal/min)



Description	Order Code
Heavy Duty Stainless Steel Water Gun	SKS01051/01

The gun is enclosed in a robust non-marking blue rubber cover. The trigger provides a progressive change in spray pattern from wide cone to narrow jet.

1/2" BSP female inlet connection	
Max Pressure:	348 psi (24 bar)
Max Temp:	60°C (140°F)
Max Flow:	55 litres/min (12 gal/min)



Description	Order Code
Heavy Duty Wash Gun Blue With Protector	SKS01053

The gun is enclosed in a robust non-marking blue rubber cover complete with trigger protector. The trigger provides a progressive change in spray pattern from wide cone to narrow jet.

1/2" BSP female inlet connection	
Max Pressure:	350 psi (24 bar)
Max Temp:	95°C (200°F)
Max Flow:	50 litres/min (11 gal/min)



Description	Order Code
Superior Wash Gun With Protector	SKS01058

A superior cleaning gun with a velvety soft rubber surface weighing only 945 grams. The spray pattern of the jet can be changed from a wide cone to a narrow jet.

1/2" BSP female inlet connection	
Max Pressure:	435 psi (30 bar)
Max Temp:	95°C (200°F)
Max Flow:	22 litres/min (4.2 gal/min)



Description	Order Code
Compact Water Gun	SKS01057

With its weight of only 463 grams and its compact dimensions 145mm x 94mm x 45mm, it is particularly easy to handle. The velvety soft rubber surface adds to the comfort.

The nozzle has a new revolutionary flat design, which provides a perfect spray pattern without dripping and uses 26% less water than a regular cleaning gun.

1/2" BSP female inlet connection	
Max Pressure :	362 psi (25 bar)
Max Temp:	95°C (203°F)
Max Flow:	19 litres/min (4.2 gal/min)



Description	Order Code
Light Duty Water Gun	SKS01055

The gun is constructed from polyurethane. It has an auto shut off control and adjustable spray pattern.

3/4" BSP to 1/2" hose tail inlet connection	
Maximum Pressure:	87 psi (6 bar)
Max Temp:	50°C (122°F)
Max Flow:	33 litres/min (7 gal/min)



Description	Order Code
Light Spray Gun	SKS01059
Light Spray Gun C/W Wand Coupler	SKS01060
Foam Wand	SKS01060/01

LW Spray Gun
Blue shockproof wash down gun with variable jet & swivel connection

Specification	Pro Spray Gun LW
Rated Pressure	12bar
Max Temp	50°C (122°F)

Material in contact with water	
Pp+gf Body Nbr/epdm Seal	
Weight	420g (0.93 Lb)
Inlet	1/2" Female Swivel



Description	Order Code
Stainless Steel Swivel Connector	SKS01368

A 1/2" male BSP to 1/2" female BSP stainless steel swivel fitting for connection into any 1/2" female washdown gun.

Low Pressure PVC Braided Hoses

A range of PVC braided hoses for transfer of low pressure water/compressed air. Available in various colours.



Working Temperature
Minimum -20°C Maximum +65°C.
Maximum working pressure @ 23°C

- 1/4" – 17 bar – 250 psi
- 3/8" – 16 bar – 240 psi
- 1/2" – 12 bar – 174 psi
- 3/4" – 7 bar – 102 psi



Description		Order Code
1/4"	Clear Braided PVC Hose (30m Coil)	SKS01205/01
1/4"	Blue Braided PVC Hose (30m Coil)	SKS01206/01
1/4"	Red Braided PVC Hose (30m Coil)	SKS01207/01
3/8"	Clear Braided PVC Hose (30m Coil)	SKS01220/01
3/8"	Red Braided PVC Hose (30m Coil)	SKS01221/01
3/8"	Blue Braided PVC Hose (30m Coil)	SKS01222/01
1/2"	Clear Braided PVC Hose (30m Coil)	SKS01230/01
1/2"	Blue Braided PVC Hose (30m Coil)	SKS01231/01
1/2"	Red Braided PVC Hose (30m Coil)	SKS01232/01
3/4"	Clear Braided PVC Hose (30m Coil)	SKS01240/01
3/4"	Blue Braided PVC Hose (30m Coil)	SKS01241/01
3/4"	Red Braided PVC Hose (30m Coil)	SKS01242/01

Heavy Duty Reinforced PVC Hose



A blue flexible heavy duty PVC hose for transfer of water/compressed air.

Working Temperature
Minimum -15°C Maximum +60°C.
Maximum working pressure @ 23°C

- 1/2" – 40 bar – 580 psi
- 3/4" – 40 bar – 580 psi

Description	Order Code
1/2" Blue Heavy Duty Reinforced Hose (50m Coil)	SKS01260/01
3/4" Blue Heavy Duty Reinforced Hose (50m Coil)	SKS01261/01

Tricoflex Reinforced PVC Hose



A yellow flexible light duty PVC hose for transfer of water.

Working Temperature
Minimum -15°C Maximum +60°C.
Maximum working pressure

- 1/2" – 10 bar – 140 psi
- 3/4" – 10 bar – 140 psi

Description	Order Code
1/2" Yellow Light Duty Reinforced Hose (50m Coil)	SKS01267/01
3/4" Yellow Light Duty Reinforced Hose (50m Coil)	SKS01266/01

Low Pressure Non Reinforced PVC Hose



A non reinforced clear PVC hose for transfer of low pressure water. 1.5mm wall thickness.

Working Temperature
Minimum +10°C Maximum +50°C.
Maximum working pressure @ 23°C

- 1/4" – 5 bar – 72 psi
- 3/8" – 5 bar – 72 psi
- 1/2" – 5 bar – 72 psi
- 3/4" – 5 bar – 72 psi

Description	Order Code
1/4" Clear Low Pressure Non Reinforced Hose (30m Coil)	SKS01234/01
5/16" Clear Low Pressure Non Reinforced Hose (30m Coil)	SKS01238/01
3/8" Clear Low Pressure Non Reinforced Hose (30m Coil)	SKS01237/01
1/2" Clear Low Pressure Non Reinforced Hose (30m Coil)	SKS01235/01
3/4" Clear Low Pressure Non Reinforced Hose (30m Coil)	SKS01236/01

Stainless Steel Over Braided PTFE Lined Hose



A stainless steel over braided PTFE lined convoluted swaged hose for the transfer of a range of fluids, water, oil and most chemicals (please check compatibility). The hose comes with stainless steel swaged ends complete with male adaptors.

Size	Max. Pressure	Max. Temp
1/4"	172 bar 2500 psi	260°C 500°F
3/8"	138 bar 2000 psi	260°C 500°F
1/2"	103 bar 1500 psi	260°C 500°F
3/4"	169 bar 1000 psi	260°C 500°F
1"	46 bar 670 psi	260°C 500°F
1 1/2"	30 bar 435 psi	260°C 500°F
2"	23 bar 330 psi	260°C 500°F

Please state size and length of hose required

Camlock Couplings

A range of 1 1/2" camlock fittings available in polypropylene or stainless steel. Mainly used for connecting hoses to IBC containers.



Description		Order Code
1 1/2" Male -	1 1/2" BSP Female Polypropylene	SKS01405
1 1/2" Male -	1 1/2" BSP Female Stainless Steel	SKS01405/01
1 1/2" Female -	1 1/2" Male BSP Polypropylene	SKS01404
1 1/2" Female -	1 1/2" Male BSP Stainless Steel	SKS01404/01
1 1/2" Female -	1 1/2" Hosetail Polypropylene	SKS01401
1 1/2" Female -	1 1/2" Hosetail Stainless Steel	SKS01401/01
1 1/2" Female -	1 1/2" Female BSP Polypropylene	SKS01403
1 1/2" Female -	1 1/2" Female BSP Stainless Steel	SKS01403/01
1 1/2" Male -	1 1/2" Hosetail Polypropylene	SKS01406
1 1/2" Male -	1 1/2" Hosetail Stainless Steel	SKS01406/01
1 1/2" Male -	1 1/2" BSP Male Polypropylene	SKS01400
1 1/2" Male -	1 1/2" BSP Male Stainless Steel	SKS01400/02
1 1/2" Blank for Male Camlock Polypropylene		SKS01402
1 1/2" Blank for Male Camlock Stainless Steel		SKS01402/01
1 1/2" EPDM Seal		SKS01400/01
1 1/2" PTFE Seal for Acids		SKS01400/00

Max Pressure Rating: Temp. -10°C – 6 bar. Temp. +20°C – 8 bar. Temp. +65°C – 4 bar.

Stainless Steel Jubilee Clips

A range of stainless steel hose clips for use with low pressure hoses.



Size	Order Code	Price	Size	Order Code
9.5 – 12 mm	SKS01251	£1.24	32 – 45 mm	SKS01251/08
11 – 16 mm	SKS01251/01	£1.15	35 – 50 mm	SKS01251/09
13 – 20 mm	SKS01251/02	£1.17	40 – 55 mm	SKS01251/10
16 – 22 mm	SKS01251/03	£1.38	45 – 60 mm	SKS01251/11
18 – 25 mm	SKS01251/04	£1.53	55 – 70 mm	SKS01251/12
22 – 30 mm	SKS01251/05	£1.70	Hose Clip	SKS01252
25 – 35 mm	SKS01251/06	£1.70	Flexi Driver	
30 – 40 mm	SKS01251/07	£1.75		

Nito Low Pressure Couplings

A range of chrome plated quick connect couplings for use on low pressure systems. Maximum working pressure 25 bar.



Description	Order Code
1 Female – 1/2" Female BSP	SKS01363
Female – 3/4" Female BSP	SKS01363/01
2 Female – 1/2" Hosetail	SKS01363/02
Female – 3/4" Hosetail	SKS01363/03
3 Male – 1/2" Female BSP	SKS01363/04
Male – 3/4" Female BSP	SKS01363/05
4 Male – 1/2" Male BSP	SKS01363/06
Male – 3/4" Male BSP	SKS01363/07
5 Male – 1/2" Hosetail	SKS01363/08
Male – 3/4" Hosetail	SKS01363/09

Medium Pressure Cleaning Accessories

Medium Pressure Valves



The medium pressure valve is a moulded in stainless steel ball valve with a stainless steel T-handle. Quick connect nozzles are available for the medium pressure valve, enabling a set min/max through flow of water. The medium pressure valve is most useful in hard to reach places (under conveyors).

1/2" BSP female inlet connection
1/2" Quick Connect outlet connection

Max Pressure: 362 psi (25 bar)
Max Temperature: 60°C (140°F)
Max Flow: 60 litres/min (11 gal/min)@ 5 bar



As SKS02319 but without the quick connect fitting attached.

Description
Moulded Medium
Pressure Valve
Stainless Steel
Coupling O-Ring Set

Order Code
SKS02319

SKS02320/29

Description
Moulded Wrapped
In Valve
Stainless Steel

Order Code
SKS02319/01



Non Moulded Medium Pressure Valve Stainless Steel

The stainless steel medium pressure valve comes with a stainless steel T-handle and a protective cage. Quick connect nozzles are available, enabling a set min / max through flow of water. The stainless steel medium pressure valve is most useful in hard to reach places (under conveyors).

1/2" BSP female inlet connection
1/2" Quick connect outlet connection

Max Pressure: 362 psi (25 bar)
Max Temp.: 60°C (140°F)
Max Flow: 60 litres/min (11 gal/min) @ 5 bar

Description
Non Moulded
Medium Pressure
Valve Stainless Steel
Coupling O-Ring Set

Order Code
SKS02320/88

SKS02320/29

Medium Pressure Guns

An auto shut off gun widely used on medium pressure systems where rinse, foam and disinfectant applications are required. Available with or without quick connect coupling, enabling a set min / max through flow of water. All wetted parts of the gun are constructed from stainless steel.



1/2" BSP female inlet connection
1/2" BSP female outlet or 1/2" quick release outlet
Maximum Pressure: 910 psi (65 bar),
Maximum Temp.: 100°C (212°F),
Maximum Flow: 60 litres/min (11 gal/min).

Description
Medium Pressure Gun
Medium Pressure Gun
with quick release coupling

Order Code
SKS02202/31
SKS02202/29

Thermoplastic Hoses



A range of 1/2" thermoplastic hoses complete with stainless steel swaged ends and coupling protectors. Available in red or blue to reduce the risk of cross contamination between low and high risk production areas.

Maximum Pressure 40 bar (580 psi)
Maximum Temperature 70°C (158°F)

Blue	
Length	Order Code
5 mtr	SKS01290
10 mtr	SKS01290/01
15 mtr	SKS01290/02
20 mtr	SKS02342/03
25 mtr	SKS02342/04
30 mtr	SKS02342/05
40 mtr	SKS02342/06

Red	
Length	Order Code
5 mtr	SKS01291
10 mtr	SKS01291/01
15 mtr	SKS01291/02
20 mtr	SKS01291/03
25 mtr	SKS01291/04
30 mtr	SKS01291/05
40 mtr	SKS01291/06

Premium Medium Pressure Hoses

A range of medium pressure 1/2" premium quality hoses with stainless steel swaged ends and coupling protectors.

A top of the range hose with an impregnated cover which is resistant to bacterial growth and prolongs hose life. With a blue, smooth, ozone, weather, heat and oil resistant outer jacket in NBR/PVC rubber and a smooth inner surface in NBR rubber. Please note Hoses are supplied with 1/2" male BSP ends.

Maximum pressure : 200 bar (2800 psi)
Maximum temperature : 100°C (212°F)

Blue	
Length	Order Code
10 mtr	SKS01297/01
15 mtr	SKS01297/02
20 mtr	SKS01297/03
25 mtr	SKS01297/04
30 mtr	SKS01297/05



Medium Pressure Nozzles

A range of medium pressure nozzles with colour coded nozzle protectors and male quick connect fitting. For use on medium pressure washdown systems to enable easy connection to a medium pressure valve or a medium pressure gun. Flow rates based on a 20 bar water supply.



Description	Order Code
Grey = 20 litres per minute - 00°	SKS02202/45
Grey = 20 litres per minute - 15°	SKS02202/46
Grey = 20 litres per minute - 25°	SKS02202/47
Grey = 25 litres per minute - 00°	SKS02320/101
Grey = 25 litres per minute - 05°	SKS02320/109
Grey = 25 litres per minute - 15°	SKS02320/104
Grey = 25 litres per minute - 25°	SKS02320/105
Green = 30 litres per minute - 00°	SKS02202/00
Green = 30 litres per minute - 05°	SKS02320/111
Green = 30 litres per minute - 15°	SKS02202/01
Green = 30 litres per minute - 25°	SKS02202/02
Blue = 40 litres per minute - 00°	SKS02320/75
Blue = 40 litres per minute - 05°	SKS02320/115
Blue = 40 litres per minute - 15°	SKS02320/74
Blue = 40 litres per minute - 25°	SKS02320/16

Disinfectant Nozzles



Description	Order Code
Yellow = 20 litres per minute - 60°	SKS02320/15
Yellow = 30 litres per minute - 60°	SKS02320/07

Foam Nozzles



Description	Order Code
White = 100 litres per minute - 65°	SKS02320/06
White = 150 litres per minute - 65°	SKS02320/71
White = 200 litres per minute - 50°	SKS02320/70
white = 200 litres per minute 65°	SKS02320/106

Nozzle Protectors



The nozzle protectors are available separately in the following colours.

Description	Order Code
Grey	SKS02320/31
Blue	SKS02320/32
Green	SKS02320/33
Yellow	SKS02320/34
White	SKS02320/36

MP Combi Tool



The stainless steel MP combi tool does away with the need for separate rinse, foam and disinfectant nozzles, as it is a combination of all three. By attaching to a MP gun SKS02202/31 and turning the front you can select rinse, foam and disinfectant without having to keep changing nozzles. The stainless steel MP combi tool comes with a 15/30 rinse nozzle, a 65/150 foam nozzle and a 65/20 disinfectant nozzle. 1/2" BSP Male inlet connection.

Description	Order Code
MP Combi Tool	SKS02321/01

Stainless Throw Nozzle



A stainless steel nozzle which is designed to project the foam further than the standard foam nozzle. This is useful for cleaning high ceilings, gantry's or places unreachable with a standard nozzle.

Description	Order Code
Stainless Steel Throw Nozzle	SKS02320/04

750mm Rinse Lances



As rinse nozzles but attached to a 750mm lance. Flow rates based on 20 bar water supply.

Below are the commonly used flow rates, other flow rates, fan angles and lengths of lance are available on request.

Description	Order Code
Grey = 20 litres per minute – 00°	SKS02345/01
Grey = 20 litres per minute – 15°	SKS02345/02
Grey = 20 litres per minute – 25°	SKS02345/03
Green = 30 litres per minute – 00°	SKS02202/57
Green = 30 litres per minute – 15°	SKS02202/49
Green = 30 litres per minute – 25°	SKS02202/50
Blue = 40 litres per minute – 00°	SKS02202/51
Blue = 40 litres per minute – 15°	SKS02202/52
Blue = 40 litres per minute – 25°	SKS02202/53

Couplings

A range of quick connect couplings for use on medium pressure systems



Description	Order Code
Male - 1/2" BSP Female	SKS01315



Description	Order Code
Female - 1/2" BSP Female Coupling O-Ring Set	SKS02202/08 SKS02320/29



Description	Order Code
Female - 1/2" BSP Male Coupling O-Ring Set	SKS02202/18 SKS02320/29



Description	Order Code
Male - 1/2" BSP Male	SKS02307

System Cleaners Modular Equipment

A range of System Cleaners pump stations, dilution pump stations, satellites and mobile units.

Cleaning and disinfecting in the food and beverage industry are one of the cornerstones of producing a product which is safe for the consumer to eat or drink.

Therefore, processors should be investing time and money to find the optimal cleaning solution that not only improves food safety and hygiene but is also efficient, sustainable, and user-friendly.

So, it is all about choosing a cleaning solution based on the right technology. Good production hygiene and correct cleaning are essential when you want to produce quality products with a high level of food safety and optimal shelf life.

Optimising on the cleaning process by using the right technology will not only have a positive impact on the quality of your products, but it will also improve the working environment for the cleaning staff as well as reduce cleaning time and water consumption.

Applying our open plant cleaning solutions in your food or beverage processing plant offers a high degree of flexibility in the choice of equipment and enables you to find the combination that matches your specific requirements for a cleaning solution.

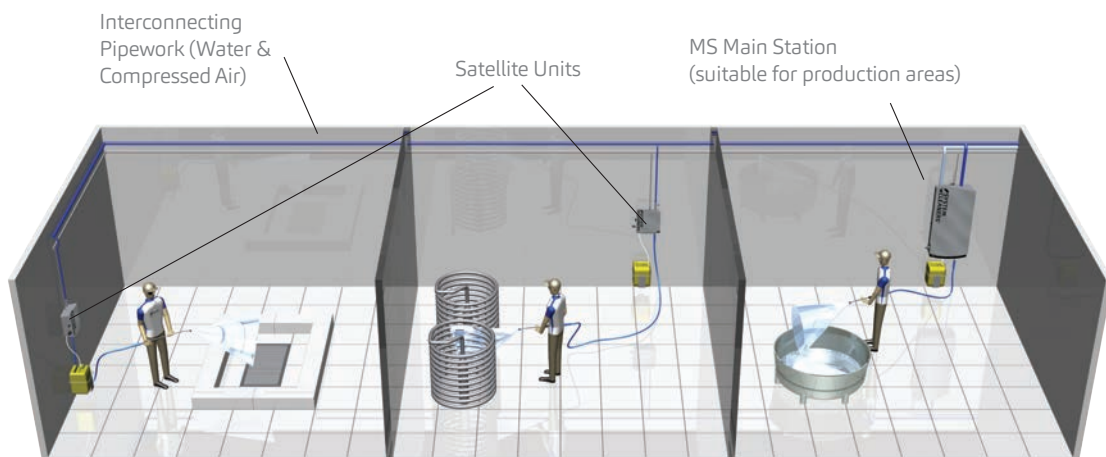
Local Pick Up System

A decentral solution stores and dispenses the concentrated detergents at each workstation – a main station or satellite.

All units can rinse, apply foam and/or disinfect (depending on the choice of equipment), and the concentration of the chemical can be adjusted for the workstation concerned. Decentral solutions can be either fixed to the

wall or mounted on a trolley (mobile units). Both wall-mounted and trolley models can be used at the same processing site.

The system can be connected to mains water supply or to a boosted water supply from a System Cleaners supply station. It is an easy solution to install in existing facilities.

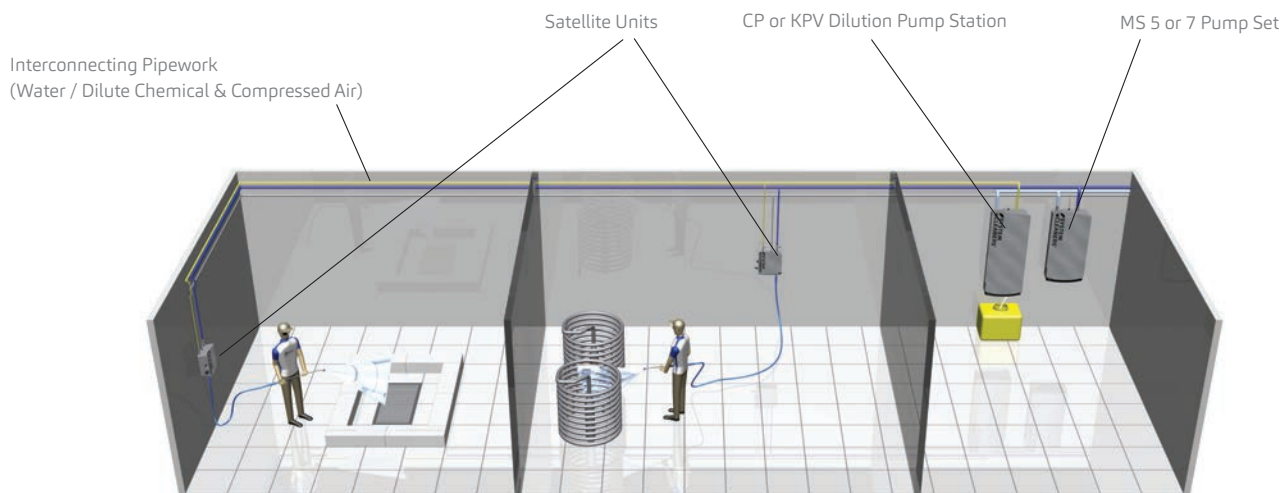


BS pump stations would be located in a plant room or suitable non-production area.

Pre Dilute System

A central solution is characterized by prediluted detergents being pumped to each workstation from a chemical pump station placed in a separate, central location. It minimises the daily handling of detergents, ensures uniform concentration for all users and makes operating the individual

system as simple and safe as possible. The solution is often recommended in connection with the expansion of production facilities and/or new construction.



BS pump stations would be located in a plant room or suitable non-production area.

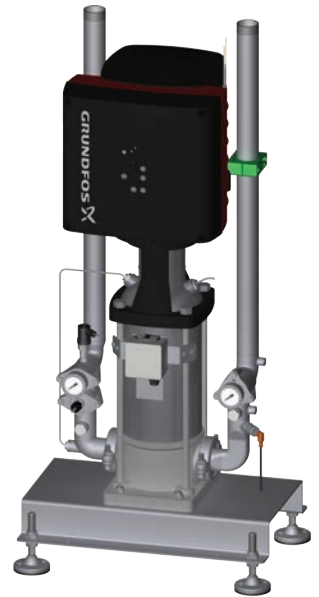
BS Pump Station

The BS type pump station performs the function of a water booster pumpset. The BS unit is a means of supplying 20 bar pressurised water to independent satellite stations and rinsing outlets via pipework. The pump is inverter controlled, thus maintaining a constant outlet pressure. The type of pump station required is selected based on the number of operators simultaneously using the rinsing function. The BS unit requires a suitable water supply and a three-phase electrical supply.

The unit should not be placed directly in food production areas.

Specification

Model:	BS3	BS5	BS7	BS10-20
Max No of operators simultaneously	3	5	7	10
Minimum inlet water supply	90 litres/min	150 litres/min	210 litres/min	300 litres/min
Minimum inlet water pressure	1.5 bar	1.5 bar	1.5 bar	1.5 bar
Maximum inlet water pressure	10 bar	10 bar	10 bar	10 bar
Maximum inlet water temperature	70 °C	70 °C	70 °C	70 °C
Maximum outlet water pressure	20 bar	20 bar	20 bar	20 bar
Water Inlet	1 ½" BSP	1 ½" BSP	1 ½" BSP	2" BSP
Water Outlet	1 ½" BSP	1 ½" BSP	1 ½" BSP	3" DN80
Electrical Supply	415V 3ph 50Hz 4KW	415V 3ph 50Hz 6KW	415V 3ph 50Hz 7.5KW	415V 3ph 50Hz 11KW
Weight	100 kg	130 kg	150 kg	210 kg
Height	1210 mm	1210 mm	1210 mm	1215 mm
Width	570 mm	570 mm	570 mm	825 mm
Depth	410 mm	410 mm	410 mm	445 mm
Order Code	SKS02353/00	SKS02353	SKS02353/01	SKS02353/02



MS5 & 7 20 Bar Main Station

The MS type pump station performs the functions of both a water booster pumpset and a satellite station. Firstly, the unit is a means of supplying 20 bar pressurised water to independent satellite stations and rinsing outlets via pipework. Secondly, it is an independent satellite station for application of foaming detergent (MS5F, MS7F) or foaming detergent and disinfectant (MS5FD, MS7FD). Standard accessories provided with satellite include: nozzle holder with screw set - key - wall mounting bracket with screws.

The type of station required is selected on the basis of the number of operators simultaneously using the rinsing function. The MS unit requires a suitable water supply, three phase electrical supply and a compressed air supply. The unit can be placed directly in food production areas and has been designed to EHEDG guidelines.



Model:

Specification

Max No of operators simultaneously
Min inlet water supply
Min inlet water pressure
Max inlet water pressure
Max inlet water temperature
Max outlet water pressure
Min compressed air supply pressure
Compressed air volume (per unit min.)
Electrical supply
Water inlet connection
Water outlet connection
Maximum Hose Length
Weight
Height
Width
Depth
Order Code

Model:

Order Code

MS 5F

Rinse & Foam

5
150 litres/min
1.5 bar
10 bar
70°C
20 bar
5 bar
150 litres/min
415V 3ph 5.5kw
1 1/2"
1 1/2"
30m
125kg
1240 mm
680 mm
380 mm
SKS02390

MS 5FD

Rinse,Foam & Disinfect

SKS02391

MS 7F

Rinse & Foam

7
200 litres/min
1.5 bar
10 bar
70°C
20 bar
5 bar
150 litres/min
415V 3ph 7.5kw
1 1/2"
1 1/2"
30m
150kg
1240 mm
680 mm
380 mm
SKS02392

MS 7FD

Rinse,Foam & Disinfect

SKS02393

MS1 10 Bar Main Station

The MS1 10 Bar Main Station is an independent satellite station allowing selection of rinsing and foam application (MS 1F), or rinsing foam and disinfection application (MS 1FD). The individual functions are selected by turning a switch on the side of the cabinet.

The inlet water supply is increased by 10 bar via the integral water booster pump. The MS1 unit requires a suitable water supply, single-phase electrical supply and a compressed air supply. Standard accessories provided with MS1 Main Station include: nozzle holder with

screw set - key - wall mounting frame with screws.

The unit can be placed directly in food production areas and has been designed to EHEDG guidelines.



Model:

Specification

Minimum water supply
Minimum water inlet pressure
Maximum water inlet pressure
Maximum pump pressure
Maximum water inlet temperature
Minimum inlet air pressure
Maximum inlet air pressure
Minimum air supply
Electrical supply
Maximum Hose Length
Weight excluding accessories
Height
Width
Depth

Order Code

MS 1F Rinse & Foam

50 litres/min
1.5 bar
6 bar
10 bar
70°C
5 bar
10 bar
150 litres/min
240 volt a.c. 1.1kw
20m
50 kg
740 mm
680 mm
380 mm

SKS02394

MS 1FD Rinse, Foam & Disinfect

50 litres/min
1.5 bar
6 bar
10 bar
70°C
5 bar
10 bar
150 litres/min
240 volt a.c. 1.1kw
20m
65 kg
740 mm
680 mm
380 mm

SKS02395

S1 Satellite System

The S1 is a compact satellite station mainly used for cleaning in the food industry. It is built for connection to a pressurised water supply from a System Cleaners main station, pump station or mains water supply. The S1 is an excellent, simple solution for central or decentral cleaning with one foam product. The standard S1 can be used in a pressure range of 3-8 bar or 10-25 bar.



Model:

Specification

Maximum number of operators
Minimum water inlet pressure
Maximum water inlet pressure
Minimum water supply
Maximum water inlet temperature
Air supply
Minimum air inlet pressure
Maximum air inlet pressure
Minimum air supply
Water inlet connection
Maximum hose sizes
Weight
Height
Width
Depth

Order Code

S1 F (3-8)

1
3 bar
8 bar
30 litres/min
70 degrees C
8 mm
5 bar
10 bar
150 litres/min
1/2"
3/4" x 15m
5 kg
308 mm
346 mm
138 mm

SKS03760

S1 F (10-25)

1
10 bar
25 bar
30 litres/min
70 degrees C
8 mm
5 bar
10 bar
150 litres/min
1/2"
35m
5 kg
308 mm
346 mm
138 mm

SKS03770

S2 Satellite Station

The S2 is a simple, robust and reliable satellite station for decentral and central cleaning. It is connected to pressurised water from a System Cleaners' main station, pump station or mains water supply. It can rinse, foam and disinfect, and works within the range of 3-8 bar or 10-40 bar. and operated with a mechanical selector switch



Model:	S2 F D (3-8)	S2 F D (15-40)	S2 PF PD (10-25)
Specification			
Maximum number of operators	1	1	1
Minimum water inlet pressure	3 bar	15 bar	10 bar
Maximum water inlet pressure	8 bar	40 bar	25 bar
Minimum water supply	30 litres/min	30 litres/min	30 litres/min
Maximum water inlet temperature	70 degrees C	70 degrees C	70 degrees C
Air Supply	8 mm	8 mm	8 mm
Minimum air inlet pressure	5 bar	5 bar	5 bar
Maximum air inlet pressure	10 bar	10 bar	10 bar
Minimum air supply	150 litres/min	150 litres/min	150 litres/min
Water Inlet Connection	1/2"	1/2"	1/2"
Maximum Hose Length	¾" x 15m	35m	35m
Weight excluding accessories	5 kg	5 kg	5 kg
Height	486 mm	486 mm	486 mm
Width	336 mm	346 mm	336 mm
Depth	149 mm	149 mm	149 mm
Order Code	SKS03750	SKS03748	SKS02352

S3 Satellite Station

The S3 can rinse, apply foam and disinfect, and the large handle makes it easy to operate. It is available in two pressure ranges: 3-8 bar for connection to mains water supply and 15-25 bar for connection to a boosted water supply. Applicable for central, decentral and hybrid chemical supply.

The satellite can administer two chemical products on the same outlet with the option to add an extra outlet for a third product. All three products can be either concentrated or prediluted. As a new feature, the mechanical function selector automatically switches the air supply

on/off depending on the function selected. This enables easier operation as well as safeguards the cleaning process. The injector is made from PTFE which minimises deposits. The S3 has a hygienic design suitable for any food or beverage processing facility. The cabinet as well as the main part of internal components are in stainless steel and 100% recyclable.

All our satellite cleaning stations are also available as trolley mounted versions.

Model:	S3 F D (3-8)	S3 F D (15-25)	S3 PF PD (15-25)	S3 PF PD + F (15-25)
Specification				
Maximum number of operators	1	1	1	1
Minimum water inlet pressure	3 bar	15 bar	15 bar	15 bar
Maximum water inlet pressure	8 bar	25 bar	25 bar	25 bar
Minimum water supply	30 litres/min	30 litres/min	30 litres/min	30 litres/min
Maximum water inlet temperature	70 degrees C	70 degrees C	70 degrees C	70 degrees C
Air Supply	8 mm	8 mm	8 mm	8 mm
Minimum air inlet pressure	5 bar	5 bar	5 bar	5 bar
Maximum air inlet pressure	10 bar	10 bar	10 bar	10 bar
Minimum air supply	150 litres/min	150 litres/min	150 litres/min	150 litres/min
Water Inlet Connection	1/2"	1/2"	1/2"	1/2"
Maximum Hose Length	¾" x 15m	35m x ½"	35m x ½"	35m x ½"
Weight excluding accessories	10.8 kg	10.8 kg	10.8 kg	10.8 kg
Height	375 mm	375mm	375 mm	375 mm
Width	335 mm	335 mm	335 mm	335 mm
Depth	205 mm	205 mm	205 mm	205 mm
Order Code	SKS03781	SKS03790	SKS03791	SKS03792



CP Dilution Pump Stations

The CP chemical dilution pump stations mix water and neat detergent or neat disinfectant in a small holding tank located within the unit. The dilute detergent or disinfectant is then transferred via a stainless steel booster pump and pipework to satellite stations for applying

foam or disinfectant. The CP is equipped with an automatic start/stop function. If the outlet pressure drops the pump automatically maintains the pre-set pressure by means of an inverter drive. The type of pump station required is selected on the basis of the number of

operators simultaneously using the foaming or disinfecting function.

The CP unit can be placed directly in food production areas and has been designed to EHEDG guidelines.



Model:	CP5	CP7
Specification		
Max Number of operators	5	7
Minimum inlet water supply	40 litres/min	75 litres/min
Minimum inlet water pressure	3 bar	3 bar
Maximum inlet water pressure	10 bar	10 bar
Maximum inlet water temperature	30°C	30°C
Maximum outlet water pressure	12 bar	12 bar
Water Inlet Connection	3/4"	3/4"
Water Outlet Connection	3/4"	3/4"
Electrical Supply	240V 1ph 50Hz 1.1KW	415V 3ph 50Hz 2.2KW
Weight	95 kg	130 kg
Height	1520 mm	1520 mm
Width	680 mm	680 mm
Depth	380 mm	380 mm
Order Code	SKS02370	SKS02370/01

DWSF Doorway Sanitiser

The DWSF Doorway Sanitiser has been specially developed for the control of Listeria in areas where there is potential for it to be moved from one production area to another

via a doorway or passage. The unit will automatically leave a layer of foam or disinfectant on a floor area via the inbuilt timers and the two spraying nozzles. The first

timer controls the intervals between the application of the chemical and a second timer controls the duration of the individual sessions of the application.



Model:	DWSF
Specification	
Minimum water inlet pressure	3 bar
Maximum water inlet pressure	9 bar
Minimum water supply	10 litres/min
Maximum water inlet temperature	70°C
Air Supply	6mm
Minimum air inlet pressure	5 bar
Maximum air inlet pressure	10 bar
Minimum air supply	150 litres/min
Water Inlet Connection	1/4"
Weight	10 kg
Height	595 mm
Width	460 mm
Depth	206 mm
Order Code	SKS03780

Voyager 1 10 Bar Mobile Units

The Voyager 1 is a 10 bar mobile cleaning trolley that incorporates the following cleaning functions: rinsing, foaming and disinfecting. The Voyager 1 is available in two variants without built in compressor Voyager 1 and with built in compressor (oil free) Voyager 1K.

The Voyager can be connected to cold or hot

water, compressed air (Voyager 1) and a 240 volt electrical supply, which increases the outlet water pressure by 10 bar (140 psi), via the integral water booster pump.

The chemicals are stored away neatly in the compartment within the unit.

The individual functions for rinsing, foaming and disinfecting are selected by turning a

switch on the back of the Voyager.

Standard accessories provided with the Voyager 1 include: rinsing nozzle, foam nozzle, disinfection nozzle, 20 metre outlet hose, low pressure valve, inlet hose and 5 metres of electrical cable.

Model:	Voyager 1	Voyager 1K
Specification	Rinse, Foam & Disinfect	Rinse, Foam & Disinfect With Built-in Compressor
Min water inlet pressure	1.5 bar	1.5 bar
Max water inlet pressure	6 bar	6 bar
Max pump pressure	10 bar + inlet pressure	10 bar + inlet pressure
Min water supply	50 litres/min	50 litres/min
Max water inlet temperature	70°C	70°C
Min inlet air pressure	4 bar	n/a
Max inlet air pressure	10 bar	n/a
Min air supply	150 litres/min	n/a
Electrical supply	240 volt a.c.	240 volt a.c.
Max Hose Length	20m	20m
Weight excluding accessories	70 kg	90 kg
Height	970 mm	970 mm
Width	570 mm	570 mm
Depth	1350 mm	1350 mm
Order Code	SKS02375	SKS02376



Voyager 2 20 Bar Mobile Units

The Voyager 2 is a medium pressure mobile cleaning trolley that incorporates the following cleaning functions: rinsing, foaming and disinfecting. The Voyager is available in two variants without built in compressor Voyager 2 and with built in compressor (oil free) Voyager 2K.

The Voyager can be connected to cold or hot water, compressed air (Voyager 2) and a 415

volt, 3 phase electrical supply, which increases the outlet water pressure to 20 bar via the integral water booster pump.

The chemicals are stored neatly away in the compartment within the unit.

The individual functions for rinsing, foaming and disinfecting are selected by turning a switch on the back of the cabinet.

Standard accessories provided with the Voyager include: rinsing nozzle, foam nozzle, disinfection nozzle, 20 metre outlet hose, low pressure valve, inlet hose and 10 metres of electrical cable.

Model:	Voyager 2	Voyager 2K
Specification	Rinse, Foam & Disinfect	Rinse, Foam & Disinfect With Built In Compressor
Min water inlet pressure	1.5 bar	1.5 bar
Max water inlet pressure	10 bar	10 bar
Min water supply	50 litres/min	50 litres/min
Max water inlet temperature	70°C	70°C
Min inlet air pressure	5 bar	n/a
Max inlet air pressure	10 bar	n/a
Min air supply	150 litres/min	n/a
Electrical supply	415 volt a.c. 2.2KW	415 volt a.c. 2.2KW
Maximum Hose Length	25m	25m
Weight excluding accessories	100 kg	120 kg
Height	970 mm	970 mm
Width	570 mm	570 mm
Depth	1350 mm	1350 mm
Order Code	SKS02396	SKS02397



Boons Fis Modular Equipment

Boons 20 Bar Mobile Main Stations

Description - A mobile main station is a simple way to clean a food or beverage production area. This SMU (Single Mobile Unit) is a cleaning system made up of a centrifugal frequency controlled booster pump with an integrated satellite.

The SMU is mounted on a mobile trolley and the foam detergent or disinfectant is drawn from the integrated keg holder by flexible hoses. The desired cleaning function (rinsing, foaming or disinfecting) is determined via the electromechanically operated switch.

Compressed air is not always available where the SMU needs to be used so there is the option to have a built-in and oil-free compressor with the SMU-K-20/1-GR.

The booster station is supplied with the following standard accessories: a 25m Premium Boonsjet hose, blue rinse nozzle, yellow disinfectant nozzle, white foam nozzle and a low pressure valve.



Model:	SMU-20	SMU-K-20
Specification		
Min water inlet pressure	0.5 bar	0.5 bar
Max water inlet pressure	10 bar	10 bar
Min water supply	35 litres/min	35 litres/min
Max water inlet temperature	70°C	70°C
Min inlet air pressure	3 bar	n/a
Max inlet air pressure	6 bar	n/a
Min air supply	150 litres/min	n/a
Electrical supply	415V 3ph 3.5kW (5m cable supplied)	415V 3ph 3.5kW (5m cable supplied)
Recommended Hose Length	10m min. – 25m max. ½"	10m min. – 25m max. ½"
Weight excluding accessories	97 kg	117 kg
Dimensions	L x W x D 520 x 900 x 550 mm	L x W x D 520 x 900 x 550 mm
Order Code	SKS08001	SKS08000

Stainless Steel Pipework Fittings

A range of stainless steel pipework fittings suitable for most low pressure applications



Description	Order Code
1/4" Male BSP - 1/4" Hosetail	SKS01950
3/8" Male BSP - 3/8" Hosetail	SKS01950/03
1/2" Male BSP - 1/2" Hosetail	SKS01950/07
3/4" Male BSP - 3/4" Hosetail	SKS01950/10
1" Male BSP - 1" Hosetail	SKS01950/13



Description	Order Code
3/8" to 1/4" BSP Reducing Socket	SKS01957
1/2" to 3/8" BSP Reducing Socket	SKS01957/01
1/2" to 1/4" BSP Reducing Socket	SKS01957/02
3/4" to 1/2" BSP Reducing Socket	SKS01957/03
3/4" to 3/8" BSP Reducing Socket	SKS01957/04
3/4" to 1/4" BSP Reducing Socket	SKS01957/05
1" to 3/4" BSP Reducing Socket	SKS01957/06
1" to 1/2" BSP Reducing Socket	SKS01957/07
1" to 3/8" BSP Reducing Socket	SKS01957/08



Description	Order Code
3/8" BSP - 1/4" BSP Reducing Bush	SKS01955
1/2" BSP - 1/4" BSP Reducing Bush	SKS01955/01
1/2" BSP - 3/8" BSP Reducing Bush	SKS01955/02
3/4" BSP - 1/2" BSP Reducing Bush	SKS01955/03
1" BSP - 3/4" BSP Reducing Bush	SKS01955/04



Description	Order Code
1/4" BSP Female Elbow	SKS01951
3/8" BSP Female Elbow	SKS01951/01
1/2" BSP Female Elbow	SKS01951/02
3/4" BSP Female Elbow	SKS01951/03
1" BSP Female Elbow	SKS01951/04



Description	Order Code
1/4" BSP Tee	SKS01953
3/8" BSP Tee	SKS01953/01
1/2" BSP Tee	SKS01953/02
3/4" BSP Tee	SKS01953/03
1" BSP Tee	SKS01953/04



Description	Order Code
1/4" BSP Ball Valve	SKS01956
3/8" BSP Ball Valve	SKS01956/01
1/2" BSP Ball Valve	SKS01956/02
3/4" BSP Ball Valve	SKS01956/03
1" BSP Ball Valve	SKS01956/04

(All valves 1000 psi rating)



Description	Order Code
1/4" BSP Socket	SKS01952
3/8" BSP Socket	SKS01952/01
1/2" BSP Socket	SKS01952/02
3/4" BSP Socket	SKS01952/03
1" BSP Socket	SKS01952/04



Description	Order Code
1/4" BSP Hexagonal Nipple	SKS01954
3/8" BSP Hexagonal Nipple	SKS01954/01
1/2" BSP Hexagonal Nipple	SKS01954/02
3/4" BSP Hexagonal Nipple	SKS01954/03
1" BSP Hexagonal Nipple	SKS01954/04

Foam Application Equipment

Dema Portable Foam Unit

The Dema Portable Foam Unit is a non-pressurised fully mobile foam generator requiring only an air supply. The reservoir is filled with pre-diluted foam detergent solution and connected to an industrial air supply.

The air supply operates the on board pump, which draws the pre-diluted foam detergent out of the reservoir. A single adjustment valve allows the dryness of the foam to be adjusted.
A 9 meter foam hose, control valve and foam nozzle allows the application of high quality foam to an area.

Description	Order Code
Dema Foam Unit	SKS01920
Dema Foam Unit (For Chlorinated Products)	SKS01920/00

Vessel Capacity: Approximately 95 litres
Air Supply Required
Pressure 4 to 6 bar (60 to 85 psi)
Flow 10 m3/h (150 litres/min)
Air Inlet Connection: 3/8" hoesetail



20 Litre Dema Portable Foam Unit

The 20 Litre Dema portable foam unit is a non-pressurised fully mobile foam generator requiring only an air supply. The reservoir is filled with pre-diluted foam detergent solution and connected to an industrial air supply.

The air supply operates the on the board pump, which draws the prediluted foam detergent out of the reservoir. A small single adjustment valve allows the dryness of the foam to be adjusted. A 6 metre foam hose, control valve and foam nozzle allow the application of high quality foam to an area.

Description	Order Code	Vessel capacity : approximately 20 litres
20 Litre Dema Portable Foam Unit	SKS01928	Air supply required : pressure 4 to 6 bar (60 to 85 psi) Flow : 10m3/h (150 l/min) Air inlet connection : 3/8" hoesetail



Drain Foam Attachment

Features:
Foam travels through drains, providing 360° contact along pipe walls for maximum sanitation.
Stainless steel foam disc to cover drains up to 12 inches (30.5 cm) in diameter
Rubber stopper to plug drains 3.5 to 5 inches (8.9-12.7 cm) in diameter
Stainless steel construction
Connects to compatible FOAMit units using included quick-connect fittings

Description	Order Code
Drain Foam Attachment	SKS01920/50



Dema Portable Foam Unit Spare Parts



Description	Order Code
1. Outlet Hose	SKS01920/03
2. Lance	SKS01920/01
3. Adjustment Valve	SKS01920/18
4. Air Bowl Assembly	SKS01920/34
5. Pump	SKS01920/24
5. Chlorinated Pump	SKS01920/42
6. Blue Lid	SKS01920/48
7. Red Lid	SKS01920/49

Dema Pump Up Foam Unit

The Dema Pump Up Foam Unit is a manually pressurised foaming unit that draws the diluted chemical and air from the tank to create a foam when mixed at the outlet valve. The unit is pressurised using the integral pump.

Vessel Capacity - Approximately 9 litres.

Description	Order Code
Pump Up Foam Unit	SKS01929



IK E Foam Pro 12 Battery Operated

A battery-operated sprayer, manufactured under high standards of quality, robustness, reliability and safety. Designed for the generation of dry and long lasting foam.

Valve - 4 bar setting with automatic pressure release option.
Hose - 1.3 metres
Useful capacity - 6L
Total capacity - 10L

Description	Order Code
IK E Foam Pro 12	SKS03125



LP Pressure Compact Airless Foamer

The JetNeat system is the fastest, most intuitive and convenient solution for washing, disinfecting and rinsing surfaces. The JetNeat comprises a spray gun with a quick connector, venturi and an in built chemical tank. Connected to the water tap by a flexible hose, the trigger gun is able to rinse thanks to a fresh water powerful jet. Once the venturi is quick applied at the outlet of the gun, The JetNeat produces a mixing solution that can be sprayed or foamed based on the chemical used.

Description	Order Code
JetNeat Foam Gun	SKS01931



Spraying & Fogging Equipment

Dema Portable Sprayer

The Dema Portable Sprayer is a non-pressurised fully mobile unit requiring only an air supply. The reservoir is filled with pre-diluted disinfectant or detergent solution and connected to an industrial air supply. A 10 metre hose, control valve and nozzle allows the application of the pre-diluted disinfectant or detergent solution to an area.

Vessel Capacity:	Approx. 45 litres
Air Supply Required:	Pressure 4 to 6 bar (60 to 85 psi) Flow 10 m ³ /h (150 litres/min)
Air Inlet Connection	1/4" hosetail

Description	Order Code
Dema Sprayer	SKS03142



Foggers

The Satellite Drum Top Fogjet is powered by a compressed air supply. The simple lance fits into a standard 25 litre keg of dilute detergent or disinfectant. Output is a constant 0.15 litres/min. Particle size is dependent on air pressure and is variable from sub micron to 100 micron. Suitable for fogging rooms of a volume up to 200 m³. The unit comes with a 3 meter inlet hose.

Description	Order Code
Satellite Drum Top Fogjet	SKS03220



The Satellite Fogjet Trolley is powered by a compressed air supply. The trolley is completely portable and holds 25 litres of diluted chemical. Output is a constant 0.50 litres/min. Particle size is dependent on air pressure and is variable from sub micron to 200 micron. Suitable for fogging rooms of a volume up to 600 m³.

Description	Order Code
Satellite Fogjet Trolley	SKS03230



Backpack Sprayer

A manual pump up sprayer for dispensing water or pre-diluted chemical. The sprayer comes complete with adjustable shoulder straps, flexible hose, lance and a standard nozzle that gives a flat spray pattern. Materials of construction: Polypropylene tank and pump assembly. Chemical resistant Viton seals.

Filling capacity: 20 litres max
Weight when empty: 3.6kg

Description	Order Code
Backpack Sprayer	SKS03120



IK Pump Up Sprayer

A range of sprayers especially manufactured with highly resistant materials designed to be compatible with chemical agents commonly used in the world of professional cleaning and disinfection. Especially resistant to acids.

The sprayer is pressurised using the integral pump and is controlled by a trigger valve on the gun / lance.

Description	Usable Capacity	Order Code
IK6 Multi Sprayer	4 litres	SKS03121
IK9 Multi Sprayer	6 litres	SKS03122
IK12 Multi Sprayer	8 litres	SKS03123
IK1.5 Multi Sprayer	1.5 litres	SKS03124



Trigger Spray

A trigger spray mounted on a 750ml bottle, available in different chemical variants

Description	Usable Capacity	Order Code
Holquat	750ml	SKS03106/01
Impact	750ml	SKS03106/02
Terminol	750ml	SKS03106/03
Alcosan	750ml	SKS03106/04
Impact QF	750ml	SKS03106/06
Holsolve	750ml	SKS03106/07
Excel	750ml	SKS03106/08
Degreaser	750ml	SKS03106/11
V Clean	750ml	SKS03106/12
Active	750ml	HLA28/1
Bioactive	750ml	HLB14/1
Ultra Secure Liquid	750ml	HLU8/1
Tribac	750ml	HLT27/1



Dilute Chemical Dispensing Equipment

Dosatron Range

A range of water driven chemical dilution pumps which provide a safe, controlled and economic method for dilution of chemical into either an open container, i.e. "bucket fill", or into sprayers, brushes or piped and valved systems.

These simple proportioners require no electricity and are driven by the water flow and are self priming. The units give an accurate and adjustable dilution for a wide range of flow.

A range of proportioners is available to suit the flow requirements, dilution range and type of chemical.

Note: Water Authority regulations state that no chemical dilution equipment may be connected directly to the mains supply. A suitable backflow prevention device should be installed.

D07 RE5 Range

A pair of compact Dosatron. The blue Delrin unit has a maximum water temperature rating of 40°C and the white PVDF unit has a maximum water temperature rating of 40°C.



- Flow Rate Minimum - 0.08 litres per min
- Flow Rate Maximum - 12 litres per min
- Operating Pressure Minimum - 0.3 bar (4.3 psi)
- Operating Pressure Maximum - 6 bar (85 psi)
- Maximum Water Temperature Blue Delrin - 40°C
- Maximum Water Temperature White PVDF - 40°C
- Connections - 3/4" Male BSP
- Dilution Rate - 0.8% to 5.5% v/v (Continuously Variable)

Description	Order Code
Dosatron D07RE5 Delrin	SKS02808
Dosatron D07RE5 PVDF	SKS02809

D3 RE Range

This range is for detergents, disinfectants and caustic chemicals used in the food and beverage industry.

- Flow Rate Minimum – 0.166 litres per min
- Flow Rate Maximum – 50 litres per min
- Operating Pressure Minimum – 0.3 bar (4.3 psi)
- Operating Pressure Maximum – 6 bar (85 psi)
- Maximum Water Temperature - 40°
- Connections – 3/4" Male BSP

- Dilution Rate D3 RE 2 - 0.2% to 2% v/v (Continuously Variable)
- Dilution Rate D3 RE 5 - 0.5% to 5% v/v (Continuously Variable)
- Dilution Rate D3 RE 10 - 1% to 10% v/v (Continuously Variable)

Description	Order Code
Dosatron D3 RE 2	SKS02856
Dosatron D3 RE 5	SKS02857
Dosatron D3 RE 10	SKS02858



D3 RE PVDF Range

This range is for acids and chlorinated chemicals used in the food and beverage industry.

Flow Rate Minimum – 0.166 litres per min

Flow Rate Maximum – 50 litres per min

Operating Pressure Minimum – 0.3 bar (4.3 psi)

Operating Pressure Maximum – 6 bar (85 psi)

Maximum Water Temperature - 40°C

Connections – 3/4" Male BSP

Dilution Rate D3 RE 2 - 0.2% to 2% v/v (Continuously Variable)

Dilution Rate D3 RE 5 - 0.5% to 5% v/v (Continuously Variable)

Dilution Rate D3 RE 10 - 1% to 10% v/v (Continuously Variable)

Description	Order Code
Dosatron D3 RE 2 PVDF	SKS02859
Dosatron D3 RE 5 PVDF	SKS02860
Dosatron D3 RE 10 PVDF	SKS02861



D3RE3000 Sodium Hypochlorite Dosatron

A Dosatron specifically used for the dosing of Sodium Hypochlorite.

Flow Rate Minimum –0.166 litres per min

Flow Rate Maximum - 50 litres per min

Operating Pressure Minimum – 5 psi to (4.3 psi)

Operating Pressure Maximum – 6 bar (85 psi)

Maximum Water Temperature - 40°C

Connections – 3/4" Male BSP

Dilution Rate D3-3000- 0.03% to 0.3% v/v- 42ppm to 420ppm
(Continuously Variable)

Description	Order Code
Dosatron D3-3000 AF PVDF	SKS02864



High Temperature Dosatrons

The D° HIGH TEMP high-temperature dosing pump features a set of innovative technologies which are the result of 5 years of research, field tests and mechanism improvements in order to guarantee its performance over the entire temperature range of the motive fluid, up to 70°C.

This range is compatible with all types of acid and alkaline chemicals used in the food and beverage industry.

Flow Rate Minimum – 1.67 litres per min

Flow Rate Maximum – 50 litres per min

Operating Pressure Minimum – 0.5 bar (7 psi)

Operating Pressure Maximum – 6 bar (85 psi)

Maximum Water Temperature - 70°C

Connections – 3/4" Male BSP

Dilution Rates-

Dosatron D3 TRE 5 PVDF 0.5% to 5% v/v (continuously variable)

Dosatron D3 TRE 10 PVDF 1% to 10% v/v (continuously variable)

Description
Dosatron D3 TRE 5 PVDF
Dosatron D3 TRE 10 PVDF

Order Code
SKS02866
SKS02867



Note: Water Authority regulations state that no chemical dilution equipment may be connected directly to the mains supply. A suitable backflow prevention device should be installed.

Dosalock

An antitamper device for the D3 range of Dosatrons.

The Dosalock prevents unauthorised access to the dosing stem, helping to control chemical usage and costs.

The Dosalock is made from polypropylene and comes complete with padlock and key.

Please not that this unit is not compatible with the DO7RE Dosatrons

Description	Order Code
Dosalock	SKS02865



Seko Pro Sink

For manual warewash in food service, hospitality and janitorial applications, professionals turn to the robust, reliable ProSink and ProSink R to achieve high-accuracy chemical mixing and dispensing.

Designed specifically for the dilution and dosing of detergent and disinfectant into sinks, these single and double-chemical solutions deliver consistently-precise dosing at the turn of a knob, with no electrical or compressed air connection required.

The units are housed in robust, easy-to-clean stainless-steel enclosures.

Installation requires only two or three screws and direct connection to a water supply, while the unit’s ‘quick connect’ manifold ensures simple tool-free maintenance.

Specification

- Flow rate: 16 litres (4 gallons) per minute
- Pressure: 1.4 – 6.9 bar
- Temperature: max 60°C

Description	Order Code
Pro Sink Single	SKS02521
Pro Sink Double	SKS02522



Seko Pro Max

Whether filling spray bottles, mop buckets or floor scrubbers, operators in the hospitality, food service and facilities management sectors achieve perfect proportioning at the push of a button with the ProMax chemical mixing dispenser.

This robust, reliable unit – available as a one or four-product system – connects directly to a water supply and provides precisely-diluted chemical solutions at up to 30 litres (8 gallons) per minute.

The system’s dilution accuracy is driven by a range of metering tips, included as standard, that allow users to make the finest adjustments and maximise efficiency for a broad range of chemicals.

ProMax’s wall bracket eliminates the need to open the enclosure during installation, enabling tool-free mounting, while its modular space-saving design allows further units to be easily added to an existing installation.



Description
Promax single product bottle 4l/min

Order Code
OPT52



Description
Promax single product bucket 16l/min

Order Code
OPT53



Description
Promax 4 product bottle 4l/min

Order Code
OPT54

Dema Proportioner

The Dema Proportioner provides a safe, controlled and economic method for dilution of cleaning chemicals (detergent / disinfectant). It is not suitable for feeding hoses longer than 1 metre, brushes, piped or valved systems. These simple proportioners require no electricity and are driven by the water flow. The units are self-priming and give an accurate and adjustable dilution if fed with a consistent water supply. The units have either one or two inbuilt control valves for operation.

Note: The unit is approved for direct connection to mains water supply by the Water Authority.

Flow Rate	Approx 20 litres per min @ 6 bar (80psi)	Maximum Water Temp.	80°C
Operating Pressure	Minimum 2 bar (30 psi)	Dilution Rate Adjustment	Set of coloured metering tips (supplied)
Operating Pressure	Maximum 11 bar (150 psi)	Connections	Inlet 3/4" tap thread female Outlet 1/2" hose tail



Dema Proportioner Variations

Description	Order Code
Dema Single Proportioner	SKS02519
Dema Dual Proportioner	SKS02520

Dema Proportioner Spares

Description	Order Code
1. Metering Tips	SKS02520/01
2. Chemical Pick Up Tube	SKS02520/03
3. Proportioner Body	SKS02520/09
4. Foot Valve / Filter	SKS02520/11
5.Weight	SKS02520/12
6. Outlet Discharge Tube	SKS02520/13

1



2



3



4



5



6



LP Chemical Injectors

A range of chemical injectors when connected to low pressure systems/mobiles enables dilute chemical to be provided for detergent or disinfecting applications.



Low Pressure Stainless Steel Chemical Injectors

A quality stainless steel injector for use on low pressure systems where dilute detergent or disinfectant is required. The chemical strength is controlled by inserting an orifice plate (not supplied) into the chemical inlet side to give accurate control of the chemical strength.

This injector is suitable for use with open plant cleaning systems operating up to 6 bar water pressure. Connections - 3/8" male BSP inlet / outlet.

Description	Order Code
Low Pressure St/St Red Hose	SKS01808
Low Pressure St/St Blue Hose	SKS01809



Low Pressure Stainless Steel Chemical Injector Spares

Description	Order Code
Filter & Hose Kit - Red	SKS01801/09
Filter & Hose Kit - Blue	SKS01801/10
Injector Repair Kit	SKS01808/03

Dema 203 CT Injector



This polypropylene venturi injector provides a safe, controlled and economic method for dilution of chemical on small equipment such as bootwashers. The injector is mounted directly into the pipework and chemical is picked up locally. The strength is controlled by inserting different coloured metering tips.

The flow rate varies dependent on water pressure but is typically 10 – 25 litres per minute at 3 bar. Connections - 3/8" male BSP

Description	Order Code
Dema 203 CT Injector	SKS02600

Chemical Dilution Trolley Dosatron

A stainless steel low pressure chemical dilution trolley, that when connected to a low pressure water supply mixes the water with the neat on board chemical to give a dilute solution which can either be sprayed or applied by a wash brush.

The unit comes complete with a 10 meter hose, on/off valve, spraying lance and a wash brush.

Note: Water Authority regulations state that no chemical dilution equipment may be connected directly to the mains supply. A suitable backflow prevention device should be installed with these units

Dosatron Specification

Flow Rate Minimum – 0.8 litres per min

Flow Rate Maximum - 15 litres per min

Operating Pressure Minimum – 0.3 bar (4 psi)

Operating Pressure Maximum – 6 bar (85 psi)

Dilution rate - 0.8 to 5%



Description

Dosatron Chemical Trolley

Order Code

SKS02703/01

Neat Chemical Dispensing Equipment

Seko Cratewash Dosing Unit

CrateWash is a two pumps microprocessor dosing unit with LCD display, designed for use with large crate washers in fish, dairy, meat, beverage industry or in general for CIP applications where flow rates higher than for a normal ware washing system are required.

Technical Features Type	Cratewash
Certifications	CE, EAC
Interface	Digital, with LCD 2 x 16 characters display
Protection Degree	IP55
Electrical Class	Class II (ground connection not needed)
Power Supply	100÷ 240 Vac @ 50/60 Hz
Operating Temperature	10-50°C
Storage Temperature	-20÷60°C
Consumption	40 W
Conductivity Reading Range	1 mS ÷ 100 mS with inductive probe
Case Material	Polypropylene glass reinforced
Dimensions	L. 361 – H. 254 – D. 109

Description	Order Code
Seko Cratewash Unit	SKS03410



Drain Dosing Unit

The DrainWatch dosing units are a durable and reliable dosing system suitable for indoor and outdoor applications that require the delivery of a single chemical at timed intervals.

Available as a mains or battery operated system, DrainWatch is commonly used for drain and grease trap maintenance and other purposes such as water treatment application.

DrainWatch is controlled by a real-time clock with up to 20 programmable events per day which can occur any day of the week.

DrainWatch Specification	Mains Operated	Battery Operated
Power Supply	100 - 240V AC	4 x D Cell
Motor	DC Brushed Motor	DC Brushed Motor
No. of Feeds 24 hrs	20	20
Flow Rate	100ml/m	100ml/m
Pump	Peristaltic Pump / Silicone Tube	
Installation Kit	Drain Pipe Injector Cable Tie PVC tube Weight Foot Filler	
Approvals	CE Class 2 Product Certification IP65 Rated	

Description	Order Code
Battery Drain Dosing Unit	OPTE36
Mains Drain Dosing Unit	OPTE37



WPD1 Dosing Unit

The WPD1 Dosing Unit utilises advanced electronic technology along with a diaphragm pump. It is able to provide precision chemical charging and is ideally suited to large industrial tray or rack washers. The unit is manufactured in a strong ABS enclosure with external mountings. To prevent unauthorised tampering a security code is needed to enter the programming mode.

A 25 litre or 200 litre drum spear with low level sensor is available, which when connected electrically to the WPD1 will alarm should the chemical container empty. The WPD1 can then be utilised to control a visible or audible alarm (not supplied).

Pump Head Flow Rate	Approx. 1.5 litres/min (variable)
Supply Voltage	90-265 Volts a.c.

Installation Kit & Spares

An installation kit is available and comes complete with all fittings and 10 metres of 10mm ID reinforced PVC tubing for transfer of chemical from either a 25 litre or 200 litre container to the wash tank.

Description	Order Code
1. WPD1 Dosing Unit	SKS03407
2. WPD1 Diaphragm Pump	SKS03407/02
3. WPD1 Inlet NRV	SKS03407/03
4. WPD1 Outlet NRV	SKS03407/04
5. Standard Installation Kit	SKS03404/03
6. WPD1 Circuit Board	SKS03404/06
7. Inductive Probe	SKS03404/07
8. WPD1 Keypad Membrane	SKS03404/17
9. WPD1 Dosing Unit Pump Module	SKS03408



WPD1 Dosing Unit Spear



Description	Order Code
25kg Low Level Spear	SKS03448
200kg Low Level Spear	SKS03449
25kg Battery Low Level Spear	SKS03442
200kg Battery Low Level Spear	SKS03441

Suction Lance

A low level suction lance available in either 20 litre keg, 25 litre keg or 200 litre drum sizes. The lances come with three outlets comprising of male hosedetails to allow three separate dosing units to draw chemical from one container. The suction lances are fitted with a flying lead that can be wired into a control panel to operate a light or buzzer when the chemical container is empty.

Description	Order Code
20 Litre Suction Lance	SKS03450/00
25 Litre Suction Lance	SKS03450/01
200 Litre Suction Lance	SKS03450



Double Diaphragm Air Pumps

A range of 1/2" air operated chemical transfer pumps that are self priming and can be run at variable flow rates by adjusting the air pressure. The unit can also run dry without damage to the pump.

Aro Double Diaphragm Air Pump

Specification

Materials:

Polypropylene Body/Santoprene Diaphragm or
Stainless Steel Body/PTFE Diaphragm.

Fluid connections : 1/2" inlet/outlet

Maximum flow rate fluid : 49 litres per min

Air connection : 1/4" Inlet

Maximum air inlet pressure : 6.9 bar (100 psi)

Description

Double Diaphragm Air Pump - Polypropylene/Santoprene
Double Diaphragm Air Pump - Stainless Steel/PTFE for Acid

Order Code

SKS05222
SKS05224



Tapflo Double Diaphragm Air Pump

For caustic & acid products

Specification

Materials:

HDPE Body / PTFE Diaphragm or

PTFE Body / PTFE Diaphragm

Fluid inlet connection : 1/2" BSP female

Fluid outlet connection : 1/2" BSP female

Maximum flow rate fluid : 60 litres per minute

Air inlet connection : 1/4" BSP female

Maximum air inlet pressure : 8 bar (116 psi)

Description

Tapflo Double Diaphragm Air Pump HDPE / PTFE
Tapflo Double Diaphragm Air Pump PTFE/PTFE for Acid

Order Code

SKS05223
SKS05223/01



Tapflo Batcher and Pump Package

A pneumatic batcher and pump suitable for the transfer of chemicals from an IBC, 200 litre drum or 25 litre container.

The batcher can be preset to dispense accurate and repeatable amounts of chemical.

The batcher and pump just require a suitable air supply to operate.

Please note the batcher must be run in conjunction with the pump.

For caustic & acid products

Specification

Materials:

HDPE Body / PTFE Diaphragm or

PTFE Body / PTFE Diaphragm

Fluid inlet connection : 1/2" BSP female

Fluid outlet connection : 1/2" BSP female

Maximum flow rate fluid : 60 litres per minute

Air inlet connection : 1/4" BSP female

Maximum air inlet pressure : 8 bar (116 psi)

Description

Tapflo Batcher & Pump
Tapflo Batcher & Pump For Acid
Tapflo Batcher

Order Code

SKS03091/01
SKS03091/02
SKS03091/03





25 Litre Chemical Decant Trolley

The pneumatically controlled trolley is designed to safely and accurately dose chemical from a 25 litre keg into vessels, tanks, etc. The trolley has a lift up action to allow the safe insertion and removal of the keg. It is easy to use and delivers preset dose volumes, which are set using the onboard batch controller. The chemical is drawn from the onboard chemical keg through a delivery hose to a shepherds crook.

Specification

Flow Rate	Approx. 20 litres/min
Air Supply	3 to 6 bar
Pressure	(40 to 85 psi)
Outlet	Shepherd's Crook
Inlet Connection	Flexible hose
Supplied with	Inlet hose, Discharge hose, Shepherd's Crook

Description

Chemical Decant
Trolley C/W Batcher

Order Code

SKS02701/01

Chemical Decant
Trolley without
Batcher

SKS02701/02



Portable Electrical Decant Unit

The electrical decant unit is designed to provide a safe means of decanting a wide range of chemicals on demand, by switching the pump on and using the nozzle gun to transfer chemical from IBC's or 200 litre drums into smaller kegs / containers. The operative turning on and off the nozzle gun controls the amount of product dispensed.

The set consists of:

- Drum Pump c/w speed control to minimise foaming issues (110v or 240v)
- 2 x Polypropylene 3/4" hose connectors
- 2.5m of 3/4" PVC hose
- 2 x 3/4" Hose clamps
- Nozzle PP/FEP
- Polypropylene drum adapter

Specification

Housing:	PP/PVDF
Product Connections (outlet hose):	3/4"
Density max:	1.4 S.G.
Pump flow rate max:	86 litres/min
Max temp:	Ambient °C

Description

Portable
Electrical
Decant Unit
240V
Portable
Electrical
Decant Unit
110V

Order Code

SKS02702

SKS02702/01

Container Mounted

These units are designed for dispensing the undiluted product directly from the chemical drum or keg. All units are chemically resistant and provide a safe method for dispensing concentrate.



Description	Order Code
25 litre Siphon Pump	SKS03021
200 litre Siphon Pump	SKS03020

A push pull action pump made from polypropylene, featuring a telescopic uptake. Complete with a set of adaptors to fit 200 litre containers.

Description	Order Code
Drum Pump 925 250ml per stroke	SKS03030



A drum pump with a push pull action made from polypropylene. There are two sizes available to fit 25 or 200 litre containers. As an optional safety measure a container can be purchased separately, which when screwed directly on to the outlet of either pump prevents accidental spillage of the chemical whilst decanting.

Description	Order Code
25 litre drum pump,180 ml per stroke	SKS03033
200 litre drum pump, 400 ml per stroke	SKS03022
Safety measure container, holds 1 litre max.	SKS03022/01

Description	Order Code
5 litre Plunger Pump	OPT5
A 5 Litre Plunger Pump mounted on a 5 litre cap. 30ml per stroke.	
A 5 Litre Plunger Pump mounted on a 5 Litre cap. 10ml per stroke.	OPT42
5 litre Plunger Pump	SKS03052
A 5 Litre Plunger Pump, mounted on a 5 litre cap. 4ml per stroke.	



Description	Order Code
25 litre Plunger Pump	SKS03050
A 25 Litre Plunger Pump, mounted on a 25 litre cap. 30ml per stroke.	

Decant Hose Assembly



A pair of decant hose assemblies with or without trigger for attaching to a 1 1/2" male camlock on an IBC container, to enable smooth decanting of chemical into smaller containers via a 3/4" hose.

Description	Order Code
Decant Hose Assembly	SKS01269
Decant Hose Assembly With Trigger	SKS01269/01
Trigger	SKS01269/02



Prodose Hand Pump

In food-service applications where manual warewash requires accurate, consistent and user-friendly dosing of detergents and sink sanitizers, SEKO's ProDose R chemical dispensing system is the professionals' choice.

This robust, resilient unit delivers a precise measurement of chemical every time via a large, spring-loaded dispensing button which may be colour coded to assist users with product identification.

ProDose R features a choice of six dosing settings – adjustable in a matter of seconds – along with larger-diameter fittings and 3/8" tubing to offer improved performance with high-viscosity products (>4,000 cps).

A flexible EPDM discharge spout not only provides impact resistance but also outstanding chemical compatibility for ease of use and long service life – all of which also makes the unit suitable as a janitorial chemical dispenser.

Courtesy of its smart bracket, ProDose is compatible with standard fittings and may be installed without the need for a drill if replacing an existing chemical dispensing system, while maintenance requirement is minimal and hassle-free.



Description	Order Code
Hand Pump	OPTES1

Ecomini Push Dispenser

The wall-mounted unit is operated by pushing a plunger. This rugged unit is chemically resistant and allows for easy measured dispense of the undiluted product into sinks/vessels. 30ml per stroke.

Description	Order Code
Ecomini Push Dispenser	SKS03000



High Pressure Cleaning Accessories

High Pressure Guns



Description
ST2300 High Pressure Gun with Swivel

Order Code
SKS01000/01

Lance connection 1/4" BSP female.
Inlet connection 3/8" BSP female swivel.

Max Pressure: 4500 psi (310 bar),
Max. Temp: 150°C (330°F),
Maximum Flow: 45 litres/min (10 gal/min).



Description
ST2300 High Pressure Gun with Kew Quick Connect & Swivel

Order Code
SKS01002

Lance connection via quick release coupling to suit Kew type male lance connector.
Inlet connection 3/8" BSP female swivel. The swivel allows easier handling of the gun and hose assembly.

Max Pressure: 4500 psi (310 bar),
Max. Temp: 150°C (330°F),
Maximum Flow: 45 litres/min (10 gal/min).



Description
ST2600 Easy Pull Trigger High Pressure Gun with Kew Quick Connect & Swivel

Order Code
SKS01010

Lance connection via quick release coupling to suit Kew type male lance connector.
Inlet connection 3/8" BSP female swivel. The swivel allows easier handling of the gun and hose assembly.

Max Pressure: 4500 psi (310 bar),
Max Temp: 150°C (300°F),
Maximum Flow: 45 litres/min (10 gal/min).

1/4" Kew Type Male Lance Connector



Screws onto the end of any 1/4" lance for quick connection to a Kew type high pressure gun.

Description
Stainless Steel Lance Connector

Order Code
SKS01321

Nipple & Shroud



Screws onto the end of any 1/4" lance and acts as a nozzle protector for any 1/4" nozzle. (Excluding 330mm insulated lances).

Description
Plated
Stainless Steel

Order Code
SKS01630
SKS01630/02

As above to suit 330mm insulated lances.
Plated
Stainless Steel

SKS01630/01
SKS01630/03

1/4" Non-insulated Lances



A range of 1/4" plated or stainless steel wash lances available in various sizes.

Description
Plated 120mm
Plated 600mm
Plated 1000mm
Plated 2000mm
Stainless 100mm
Stainless 600mm
Stainless 1000mm
Stainless 2000mm

Order Code
SKS01454/01
SKS01454
SKS01456
SKS01457
SKS01450
SKS01452
SKS01452/01
SKS01452/02

1/4" Insulated Lances

A range of 1/4" plated or stainless steel insulated wash lances available in various sizes.



	Total Lance Length	Insulation Length	Order Code
Plated	330mm	300mm	SKS01500
Plated	600mm	300mm	SKS01500/01
Plated	1000mm	400mm	SKS01500/02
Plated	2000mm	500mm	SKS01500/03
Stainless Steel	330mm	300mm	SKS01510
Stainless Steel	600mm	300mm	SKS01510/01
Stainless Steel	1000mm	400mm	SKS01510/02
Stainless Steel	2000mm	500mm	SKS01510/03

Twin Lances

The twin lance incorporates a high/low pressure valve with two outlet lances. These lances are equipped with a high and a low pressure nozzle. Selection is made by twisting the valve screw. The lances are used for water or a mixture of water and chemical. Please specify HP nozzle size required.

Description	Order Code
Twin Super	SKS01550
Short Lance	
Plated 1000mm	SKS01552
Twin Lance	



ST85 Variable Angle Rinse Lance

A high pressure rinse lance, that can be adjusted through an angle of between 20° and 140° by a simple push and pull method. The lance is ideal for under conveyors, drains and accessing those hard to reach places where a straight lance cannot be used. The lance comes complete with a Kew type male lance connector. Overall length of the lance is 850mm.

Maximum Pressure 210 bar - 300 psi

Maximum Temperature 150°C - 302°F

Please specify which HP nozzle is required.

Description	Order Code
ST85 Variable	SKS01553
Angle Rinse Lance	



Short Foam Lance

A short foam lance complete with a Kew type male lance connector for easy connection to a quick connect HP gun. Used on HP systems / mobiles via a chemical injector to create foam.

Description	Order Code
Short Foam Lance	SKS01857/10



Dynamic Foam Lances

Stainless steel dynamic foam lances complete with lance connector for connection to a Kew type quick connect high pressure gun. Used on high pressure systems / mobiles via a chemical injector to create foam.

Description	Order Code
Stainless Steel 600mm	SKS01857
Stainless Steel 1200mm	SKS01857/01



Rotating Turbo Nozzle



A 0° rotating nozzle available in various nozzle sizes. The inlet connection is 1/4" female and is suitable for any 1/4" lance. Maximum Temperature 80°C Maximum Pressure 200 bar – 2900 psi

Nozzle Size	Order Code
04 Brown	SKS01642/01
05 Black	SKS01642/02
06 Red	SKS01642/03
07 Peach	SKS01642/04

Vario Nozzle



A high-pressure nozzle that allows the adjustment of the spray angle from 0° through to 80° by a simple twist of the nozzle head. The vario nozzle is available in various sizes. The inlet connection is 1/4" female and is suitable for any 1/4" lance.

Nozzle Size	Order Code
03	SKS01640
035	SKS01640/01
04	SKS01640/02
045	SKS01640/03
05	SKS01640/04
055	SKS01640/05
06	SKS01640/06

Stainless Steel Drain Nozzle



A range of drain nozzles available in various nozzle sizes. The nozzle incorporates one forward and three or four reverse facing jets. The inlet is a 3/8" female.

Nozzle Size	Order Code
04 (3 jets)	SKS01643/01
055 (3 jets)	SKS01643/02
065 (4 jets)	SKS01643/03
085 (4 jets)	SKS01643/04

1/4" Stainless Steel Nozzles

A range of 1/4" stainless steel nozzles for hygiene washdown systems. Angle and size of nozzle to be specified when ordering. See nozzle selection table for details.

To choose the correct nozzle, you need to know the working pressure (in bar), the flow rate (in litres per min.) of the pump and the maximum number of people using the system at any one time.

E.g. Working pressure = 70 bar /
Maximum flow = 100 litres per min. /
Number of users = 5

Therefore max flow divided by number of users = $100 \div 5$ = each user can have 20 litres of water.

Look on the top line of the table and go to 70 bar. Follow the column down until the nearest figure below 20 is reached (18.9). Follow the row to the left until the nozzle size column is reached. The nozzle size is 10. Choose the angle size from 0°, 15°, 25°, 40°, or 65°.i.e. 25° angle, nozzle size 10. Nozzle required is a 2510.

Note: This is only a guide to choosing the maximum size of nozzle that will operate on your system. A smaller nozzle may be required to achieve the desired cleaning effect.



14.5 psi = 1 bar

Working Pressure (Bar)

Nozzle Size	30	40	50	60	70	80	90	100	110	120	130	140	150	160	175	200	225	250	300
	l/min	l/min	l/min	l/min	l/min	l/min	l/min	l/min	l/min	l/min	l/min	l/min	l/min	l/min	l/min	l/min	l/min	l/min	l/min
02	2.5	2.8	3.2	3.5	3.7	4	4.2	4.5	4.7	4.8	5	5.3	5.4	5.6	5.9	6.3	6.7	7	7.7
02.5	3.1	3.5	4	4.3	4.7	5	5.3	5.6	5.9	6.1	6.4	6.6	6.9	7.1	7.5	8	8.5	9	9.9
03	3.7	4.3	4.8	5.3	5.7	6.1	6.3	6.8	7.1	7.4	7.7	8	8.3	8.6	9	9.6	10.2	10.7	11.8
03.5	4.2	4.9	5.5	6	6.5	7	7.4	7.8	8.2	8.6	8.9	9.2	9.5	9.8	10.3	11	11.7	12.3	13.8
04	5.2	5.9	6.6	7.3	7.8	8.4	8.9	9.4	9.8	10.3	10.7	11.1	11.5	11.9	12.4	13.3	14.1	14.8	16.3
04.5	5.5	6.4	7.1	7.8	8.4	9	9.6	10.2	10.5	10.9	11.4	11.8	12.2	12.6	13.2	14.1	15	15.8	17.4
05	6.2	7.1	8	8.7	9.4	10	10.7	11.3	11.8	12.4	12.9	13.4	13.8	14.3	14.9	16	16.9	17.9	19.7
05.5	6.8	7.8	8.7	9.6	10.3	11.1	11.8	12.4	13	13.6	14.1	14.7	15.2	15.7	16.4	17.5	18.6	19.6	21.7
06	7.4	8.6	9.6	10.4	11.3	12.1	12.8	13.6	14.3	14.9	15.5	16	16.7	17.2	18	19.2	20.4	21.5	23.7
06.5	8	9.3	10.4	11.3	12.3	13.2	14	14.7	15.4	16.1	16.8	17.4	18	18.6	19.4	20.8	22	23.2	25.6
07	8.6	10	11.2	12.2	13.2	14.1	15	15.8	16.6	17.3	18	18.7	19.3	20	20.9	22.3	23.7	25	27.1
07.5	9.3	10.7	12	13.1	14.2	15.2	16.1	16.9	17.7	18.5	19.3	20	20.7	21.4	22.4	23.9	25.3	26.7	29.4
08	9.8	11.3	12.7	14	15.1	16.1	17.1	18	18.9	19.7	20.5	21.3	22	22.8	23.8	25.5	27	28.5	31.4
08.5	10.4	12.1	13.5	14.8	16	17.1	18.1	19.1	20	20.9	21.8	22.6	23.4	24.1	25.3	27	28.6	30.2	34.5
09	11.1	12.8	14.3	15.7	17	18	19.2	20.2	21.2	22.1	23	23.9	24.7	25.5	26.7	28.6	30.3	31.9	35.1
10	12.3	14.2	16	17.4	18.9	20.1	21.4	22.5	23.6	24.6	25.6	26.6	27.6	28.5	29.8	31.8	33.7	35.6	39.2
11	13.4	15.5	17.3	19	20.5	22	23.3	24.5	25.7	26.9	28	29.1	30.1	31.1	32.5	34.7	36.8	38.8	43.4
12	14.6	16.9	18.9	20.8	22.4	24	25.4	26.8	28.1	29.4	30.6	31.7	32.8	33.9	35.4	37.9	40.2	42.4	46.7
13	15.9	18.3	20.5	22.5	24.3	26	27.5	29	30.4	31.8	33.1	34.4	35.6	36.7	38.4	41.1	43.6	45.9	50.5
14	17.1	19.7	22.1	24.2	26.1	28	29.6	31.3	32.8	34.2	35.6	37	38.3	39.5	41.4	44.3	46.9	49.4	55
15	18.5	21.3	23.9	26.1	28.3	30.2	32.1	33.8	35.3	36.9	38.4	39.9	41.3	42.6	44.6	47.7	50.6	53.3	58.7
20	24.7	28.5	31.9	34.9	37.8	40.3	42.7	45.1	47.2	49.3	51.3	53.2	55.1	56.9	59.5	63.6	67.5	71.1	78.2
30	37	42.7	47.8	52.4	56.6	60.5	64.2	67.6	70.9	74	77.1	80	82.8	85.5	89.4	95.6	101	107	118
40	49.4	57	63.7	69.8	75.4	80.7	85.5	90.2	94.6	98.8	103	107	110	114	119	127	135	143	157

Any of the above nozzle sizes £4.97 each

3/8" High Pressure Hoses



A range of 3/8" HP double wire wound hoses for use on high-pressure systems. Each hose comes complete with 3/8" male adaptors and is available in blue and red.

Maximum Pressure 400 Bar (5500 psi) Maximum Temperature 150°C (300°F)

Length	Order Code
Blue	
5 mtr	SKS01101
10 mtr	SKS01102
15 mtr	SKS01103
20 mtr	SKS01104
25 mtr	SKS01105
30 mtr	SKS01106
40 mtr	SKS01108
50 mtr	SKS01110

Length	Order Code
Red	
5 mtr	SKS01101/01
10 mtr	SKS01102/01
15 mtr	SKS01103/01
20 mtr	SKS01104/01
25 mtr	SKS01105/01
30 mtr	SKS01106/01
40 mtr	SKS01108/01
50 mtr	SKS01110/01

Tema Type Couplings



Description	Order Code
Plated Male - 3/8" Female BSP	SKS01300
Plated Female - 3/8" Female BSP	SKS01301
Stainless Steel Male - 3/8" Female BSP	SKS01300/01
Stainless Steel Female - 3/8" Female BSP	SKS01301/03
O-Ring Large	SKS01301/01
O-Ring Small	SKS01301/02
Max Pressure 350 bar 5000 psi	

Stainless Steel Hansen Type (Auto Shut Off) Couplings



Description	Order Code
Male - 3/8" Female BSP	SKS01316/03
Female - 3/8" Female BSP	SKS01316/04
Male - 1/2" Female BSP	SKS01316/05
Female - 1/2" Female BSP	SKS01316/06
Max Pressure 520 bar 7500psi	

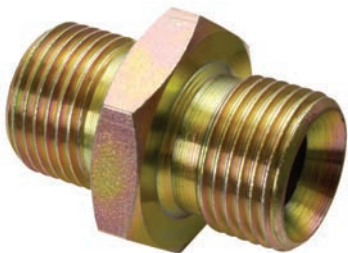
High Pressure Hooded Floor Tool

A stainless steel floor tool which operates with a series of jets that spray high pressure water via nozzles located under the hood. The floor tool connects to a high pressure gun to give control of water applied. The unit is fitted with wheels to enable easy movement and use. 1/4" Male Inlet, 80°C, 250 bar.

Description	Order Code
Stainless Steel Hooded Floor Tool	SKS01750/01



3/8" Male Cone Connector



Description	Order Code
3/8" Male Cone Connectors	SKS01370

HP Chemical Injectors

A range of chemical injectors when connected to high pressure systems/mobiles enables dilute chemical to be provided for foaming or disinfecting applications. See high pressure couplings for a range of suitable couplings to make connection simpler.

High Pressure Stainless Steel Chemical Injectors



Description
High Pressure St/St
Injector Red Hose

Order Code
SKS01801

A quality stainless steel injector for use on high pressure systems where dilute detergent or foam is required. The chemical strength is controlled by inserting an orifice plate (not supplied) into the chemical inlet side to give accurate control of the chemical strength.
3/8" male BSP inlet/outlet connections.



Description
High Pressure St/St
Injector Blue Hose

Order Code
SKS01806

A quality stainless steel injector for use on high pressure systems where dilute disinfectant is required. The chemical strength is controlled by inserting an orifice plate (not supplied) into the chemical inlet side to give accurate control of the chemical strength.
3/8" male BSP inlet/outlet connections.

Orifice Plates



Description	Order Code
Seal/Holder	SKS01802/01
Orifice Plate – 10	SKS01802/03
Orifice Plate – 14	SKS01802/05
Orifice Plate – 16	SKS01802/06
Orifice Plate – 18	SKS01802/07
Orifice Plate – 20	SKS01802/08
Orifice Plate – 24	SKS01802/10
Orifice Plate – 26	SKS01802/11
Orifice Plate – 28	SKS01802/12
Orifice Plate – 30	SKS01802/13
Orifice Plate – 32	SKS01802/14
Orifice Plate – 37	SKS01802/16
Orifice Plate – 40	SKS01802/17
Orifice Plate – 43	SKS01802/18
Orifice Plate – 45	SKS01802/19
Orifice Plate – 49	SKS01802/21
Orifice Plate – 51	SKS01802/22
Orifice Plate – 54	SKS01802/23
Orifice Plate – 57	SKS01802/24
Orifice Plate – 61	SKS01802/25
Orifice Plate – 65	SKS01802/26
Orifice Plate – 70	SKS01802/27
Orifice Plate – 75	SKS01802/28
Orifice Plate – 80	SKS01802/29
Orifice Plate – 86	SKS01802/30

Stainless Steel Chemical Injector Spares

Description
NRV Repair Kit (2 x O-Rings 1 x Spring)
Filter & Hose Kit Red
Filter & Hose Kit Blue
Stainless Steel Poppet

Order Code
SKS01801/03
SKS01801/09
SKS01801/10
SKS01801/04

Brass Chemical Injector



Description
Kew Foam
Injector

Order Code
SKS01800

A Kew injector for foaming on high pressure systems / mobiles. The dose range is adjusted by the use of a dial from 0 - 5% and comes complete with Tema couplings.

Dowty / Bonded Seals

A range of seals designed to interconnect pipework/injectors/valves/guns/hoses etc.

Description
1/4" Bonded Seal Plated
3/8" Bonded Seal Plated
1/2" Bonded Seal Plated
3/4" Bonded Seal Plated

Order Code
SKS01373
SKS01371
SKS01372
SKS01374

Description
1/4" Bonded Seal
Stainless Steel
3/8" Bonded Seal
Stainless Steel
1/2" Bonded Seal
Stainless Steel
3/4" Bonded Seal
Stainless Steel

Order Code
SKS01373/01
SKS01371/01
SKS01372/01
SKS01374/01



Chemical Containment Units & Spill Kits

IBC Bund Stands Polyethylene

A range of IBC bund stands suitable for either one or two 1,000 litre tanks, with or without decant facility, for all your IBC spill containment needs. The bund stands are constructed from environmentally friendly polyethylene, which is resistant to most chemicals and incorporates a standing surface / grid for the IBC. Please check compatibility of chemical if in doubt.

Please be aware that bunds are not designed to have chemical sat in them indefinitely. Spills should be cleaned up immediately.



Specification
Single Bund Stand
Dimensions W1350mm x L1760mm x H710mm

Description	Order Code
Single Bund Stand	SKS04008



Specification Double Bund Stand Dimensions W1350mm x L2560mm x H510mm	Description Double Bund Stand	Order Code SKS04009
--	---	-------------------------------

Specification BB3 Single IBC Spill Pallet	Order Code SKS04024
---	-------------------------------

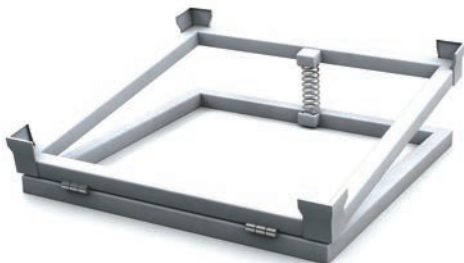
Dimensions W1330mm x L1870mm x H1030mm
Weight 95kg

- Built-in deep decanting area which allows any leaks/drips to be contained within the sump.
- 2-way forklift pockets for easy transportation.
- Compact footprint reducing floor space needed for storing IBCs within the workplace.
- Light-weight, durable, hardwearing, and robust.
- 1 x removable grids providing easy access for cleaning.
- Pallet height allows for safe dispensing as it helps eliminate back strain from constantly bending over.



IBC Tipper

The stainless steel IBC Tipper is a mechanism to maximise the dispensing of your IBC while avoiding waste, environmental and safety hazards. The IBC Tipper is a great way to fully empty the contents of an IBC. The IBC Tipper can be placed directly onto an IBC bundstand to contain spillage's and the full IBC is placed on top of the tipper. As the level in the IBC goes down the IBC tips forward to allow complete emptying of the liquid. Avoid health and safety issues that arise from makeshift tipping solutions such as wooden blocks or misused pallet trucks.



Description Stainless Steel IBC Tippers	Order Code SKS04230
---	-------------------------------

IBC Bund Stands Polyethylene with integral lockable steel container

A lockable steel container mounted on a polyethylene bund suitable for either one or two 1,000 litre tanks, for all your IBC spill containment needs. The bund stands are constructed from environmentally friendly polyethylene, which is resistant to most chemicals and incorporates a standing surface / grid for the IBC.

Please check compatibility of chemical if in doubt.

Please be aware that bunds are not designed to have chemical sat in them indefinitely. Spills should be cleaned up immediately.

Specification

External Dimensions W1840mm x L1425mm x H2405mm
Single Bund Stand with integral container

Description

Single Bund Stand
with integral container

Order Code

SKS04111



Specification

External Dimensions W1430mm x L2625mm x H2110mm

Description

Double Bund Stand
with integral container

Order Code

SKS04112



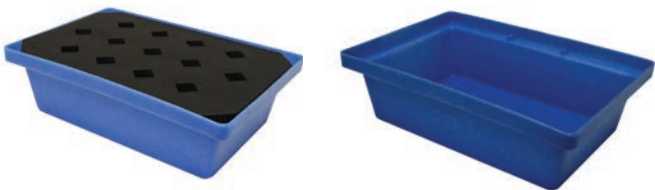
Spill Trays

A range of spill trays that provide the ideal solution for storing smaller containers and kegs and for containing spillages. The spill trays are constructed from environmentally friendly polyethylene, which is resistant to most chemicals and is available with or without a standing surface / grid. Please check compatibility of chemical if in doubt.

Please be aware that bunds are not designed to have chemical sat in them indefinitely. Spills should be cleaned up immediately.

ST20

ST20 Dimensions W395mm x L595mm x H170mm
Sump Capacity 22L
Holds 2 x 25 kg Kegs



Description	Order Code
ST20 Tray & Grid	SKS04018
ST20 Tray	SKS04018/01

ST30

ST30 Dimensions W405mm x L805mm x H170mm
Sump Capacity 31L
Holds 3 x 25 kg Kegs

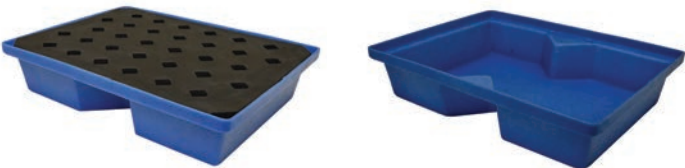


Description	Order Code
ST30 Tray & Grid	SKS04018/02
ST30 Tray	SKS04018/03

ST40

ST40 Dimensions W605mm x L800mm x H170mm
Sump Capacity 43L

Grid Holds 6 x 25 kg Kegs
Tray Holds 4 x 25 kg Kegs



Description	Order Code
ST40 Tray & Grid	SKS04018/04
ST40 Tray	SKS04018/05

ST60

ST60 Dimensions W605mm x L1000mm x H200mm
Sump Capacity 63L

Grid Holds 8 x 25 kg Kegs
Tray Holds 5 x 25 kg Kegs



Description	Order Code
ST60 Tray & Grid	SKS04018/06
ST60 Tray	SKS04018/07

ST100

ST100 Dimensions W795mm x L1195mm x H185mm
Sump Capacity 104L

Grid Holds 12 x 25 kg Kegs
Tray Holds 8 x 25 kg Kegs



Description	Order Code
ST100 Tray & Grid	SKS04018/08
ST100 Tray	SKS04018/09

Keg & Drum Bunds

A range of bunds that are designed for storing kegs and drums and containing spillages. The bunds are constructed from environmentally friendly polyethylene, which is resistant to most chemicals. Please check compatibility of chemical if in doubt.

Please be aware that bunds are not designed to have chemical sat in them indefinitely. Spills should be cleaned up immediately.

PP1



PP2 FW



PP1	Dimensions	W700mm x L900mm x H525mm Sump Capacity 225 Litres Holds 1 x 200 litre drum or 6 x 25 kg Kegs
-----	------------	---

PP2 FW	Dimensions	W820mm x L1220mm x H345mm Sump Capacity 230 Litres Holds 2 x 200 litre drum or 10 x 25 kg Kegs
--------	------------	---

Description	Order Code
PP1 Drum Bund	SKS04019
PP2 FW Drum Bund c/w Fork Entry	SKS04019/01

PP4 FW



PP4 FW	Dimensions	W1220mm x L1220mm x H390mm Sump Capacity 250 Litres Holds 4 x 200 litre drum or 20 x 25 kg Kegs
--------	------------	--

Description	Order Code
PP4 FW Drum Bund c/w Fork Entry	SKS04019/02

Drum Trolley / Decant Station

A portable drum trolley incorporating a fully bunded decant area. The 200 litre drum is strapped to the trolley for transporting. When in position the trolley can easily be tipped to convert it into a bunded decant unit.

Specifications

Drum Trolley / Decant Station
Dimensions W740mm x L1600mm x H640mm
Sump Capacity 230 Litres

Description

Drum Trolley / Decant Station

Order Code

SKS04023



Spill Kits and Top Ups

A range of portable chemical spill kits that provide a cleaning up solution for accidental chemical leaks or spillages.

The kits come in the following sizes:

15 Litre Contains

10 x Chemical Pads 50cm x 40cm, 1 x 1.2m Chemical Socks, & 2 x Waste Bags and Ties

30 Litre Contains

20 x Chemical Pads 50cm x 40cm, 2 x 1.2m Chemical Socks & 2 x Waste Bag and Ties

90 Litre Contains

48 x 50cm x 40cm Chemical Pads, 8 x 1.2m Chemical socks, 1 x 1kg Drum Plug, 1 x Hazard Tape, & 10 x Waste Bags and Ties

240 Litre Contains

150 x 50cm x 40cm Chemical Pads, 4 x 1.2m Chemical Socks, 10 x 38cm x 23cm Chemical Pillows, 1 x Floor Sign, 1 x Hazard Tape, & 18 x Chemical Waste Bags and Ties

600 Litre Contains

90 x 50cm x 40cm Chemical Pads, 20 x 1.2m Chemical Socks, 4 x 3m Chemical Booms, 16 x 38cm x 23cm Chemical Pillows, 1 Floor Sign, 1 x Hazard Tape & 40 x Chemical Waste Bags and Ties

Spill Kits

Description

15 Litre Spill Kit
30 Litre Spill Kit
90 Litre Spill Kit
240 Litre Spill Kit
600 Litre Spill Kit

Order Code

SKS04090
SKS04090/01
SKS04090/02
SKS04090/11
SKS04090/12

Spill Kits Top Ups

Description

200 x Sorbent Sheets
100 x Sorbent Pads
1 x Sorbent Roll
25 x Sorbent Minibooms
1 x Sorbent Boom

Order Code

SKS04090/05
SKS04090/06
SKS04090/07
SKS04090/08
SKS04090/09

Chemical Storage Units

Keg & Drum Storage Depots

A chemical storage facility for internal or external use manufactured from polyethylene that is resistant to most chemicals. Please check compatibility of chemical if in doubt.

Please be aware that bunds are not designed to have chemical sat in them indefinitely. Spills should be cleaned up immediately.

The units come with a lockable roller shutter door and polyethylene grid above the sump. A ramp is available for easy entry into the storage depot.

BP2HC Storage Depot



Specifications

BP2HC Storage Depot Dimensions
W990mm x L1490mm x H1690mm Sump Capacity 230 Litres
Holds 2 x 200 litre drums or 10 x 25 kg kegs

BP4HC Storage Depot



Specifications

BP4HC Storage Depot Dimensions
W1420mm x L1470mm x H2070mm Sump Capacity 410 Litres
Holds 4 x 200 litre drums or 20 x 25 kg Kegs

BP4HC Ramp



Description

BP2HC Storage Depot
BP4HC Storage Depot
BP4HC Ramp

Order Code

SKS04022/00
SKS04022
SKS04022/01

Storage Containers

A range of chemical storage cabinets / containers for the safe storage of IBC's or 200 litre drums. They are manufactured from galvanised sheet steel and are available with sliding doors.

The containers can also have a chemical resistant epoxy coating to the sump as an optional extra, but please be aware that bunds are not designed to have chemical sat in them indefinitely. Spills should be cleaned up immediately.

Due to the large range of chemical storage cabinets / containers available we are unable to list all of the different sizes and options and therefore these items can be specified and priced by contacting Kersia Engineering direct.

Specifications

1 x IBC or 4 x 200 litre drum storage container
External dimensions L1500 x W1400 x H2414

Description

1 x IBC or 4 x 200 litre
drum storage container
Epoxy coated sump

Order Code

SKS04218

SKS04218/01



Specifications

2 x IBC or 8 x 200 litre drum storage container
External dimensions L3000 x W1500 x H2450

Description

2 x IBC or 8 x 200 litre
drum storage container
Epoxy coated sump

Order Code

SKS04219

SKS04219/01



Specifications

4 x IBC or 16 x 200 litre drum storage container.
External dimensions L3000 x W1500 x H3275

Description

4 x IBC or 16 x 200 litre
drum storage container
Epoxy coated sump

Order Code

SKS04215
SKS04215/01

Specification

8 x IBC or 32 x 200 litre drum storage container.
External dimensions L5920 x W1500 x H3275

Description

8 x IBC or 32 x 200 litre
drum storage container
Epoxy coated sump

Order Code

SKS04216
SKS04216/01



Specification

12 x IBC or 48 x 200 litre drum storage container.
External dimensions L8840 x W1500 x H3275

Description

12 x IBC or 48 x 200 litre
drum storage container
Epoxy coated sump

Order Code

SKS04217
SKS04217/01



Hose Reels, Hose Hangers, Trolleys & Keg Racks

Stainless Steel Hose Reel Trolley

The Kiowa 540 stainless steel portable reel offers the best means of manoeuvring larger, heavier lengths of hose around a site or work area.

Constructed in heavy duty 304 grade stainless steel with top mount full-width roller guides, rotation lock, fold-in handle and automatic brake, which engages as soon as the unit comes to a stationary position.

This unit offers a long term, trouble free solution to portable hose management.

The trolley will take 40 meters of 1/2" hose or 60 meters of 3/8" hose

Description	Order Code
Stainless Steel Hose Reel Trolley	SKS02240



Stainless Steel Manual Rewind Hose Reel

The manual hose reel type STKi2 with closed hub is suitable for all industrial and vehicle applications. While extending the drum hub and the cross braces the length of the hose could be enlarged. A removable manual crank handle with a rotary polyamide roll is used to rewind the hose

Description	Order Code
Stainless Steel Manual Hose Reel	SKS02238

Stainless Steel Slow Retractable Hose Reel



The stainless steel Slow Retraction, Safety Series hose reels are available in two sizes. The large reel can hold a 35m 1/2" hose, and the smaller reel can hold a 20m 1/2" hose (Max 200 Bar).

These reels are constructed in non-corrosive, 304-grade stainless steel and have become the new industry standard. The adjustable retraction speed can be tailored to suit the operators and the environment with a simple adjustment that takes no more than 5-10 minutes. This can be achieved once fitted although it will be set before supply at a recommended retraction speed). The units have a twin pedestal design, ensuring greater strength and rigidity. The slow retraction safety feature will prolong the working life of the reel assembly and hose, eliminating the risk of personal injury should the operator suffer a "slip, trip or fall" or accidentally lose control of the hose

Description	Order Code
Large Slow Retractable Hose Reel	SKS02237
Small Retractable Hose Reel	SKS02239

Swivel Bracket and Hose Stopper



The 304 stainless steel swivel bracket allows the hose reel to pivot left to right through almost 180°, giving greater coverage in a large working area. Pivoting wall brackets also give a more efficient hose pull out & retrieval for the operator, which in turn cuts down the chances of hose stacking should the units be of static mount.

The working life of the hose assemblies and hose reels will also be extended significantly, whilst increasing the ease of use. Please note: The stainless steel swivel bracket is for use with the automatic slow rewind hose reel only.

Description	Order Code
Large Swivel Bracket	SKS02237/00
Small Swivel Bracket	SKS02239/01
Hose Stopper	SKS02237/01

Hose Hanger



Stainless steel wall mounted hose hanger, for neat storage of washdown hose.

The hose hanger holds up to 40 meters of 3/8" or 30 meters of 1/2" hose.

Description	Order Code
Hose Hanger	SKS02301/01

Chemical Keg Trolleys

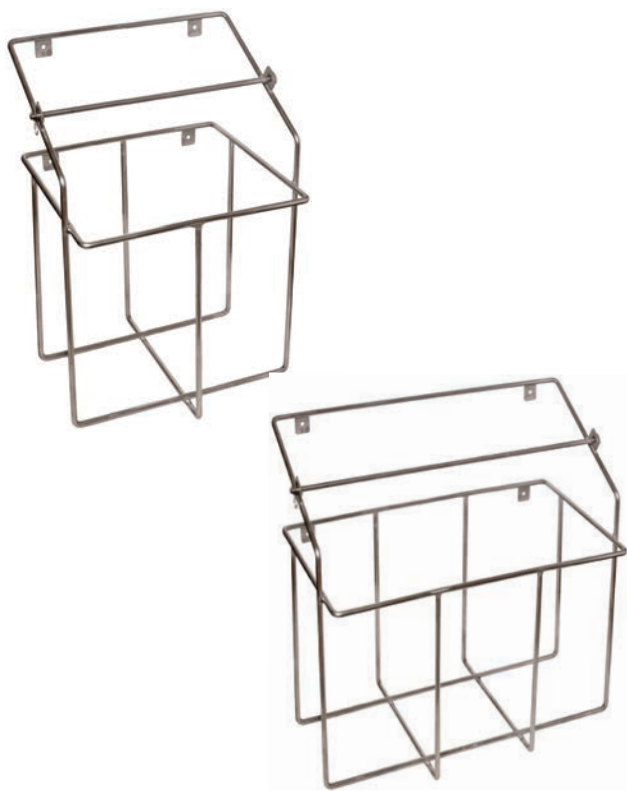


A pair of robust stainless steel chemical keg transfer trolleys, which are designed to enable the safe transportation of 25kg kegs. They come with non marking nylon wheels. Available in a single or double variant.

Specification
Single W430mm x D500mm x H995mm
Double W600mm x D520mm x H995mm

Description	Order Code
Single Stainless Steel Keg Trolley	SKS02230
Double Stainless Steel Keg Trolley	SKS02231

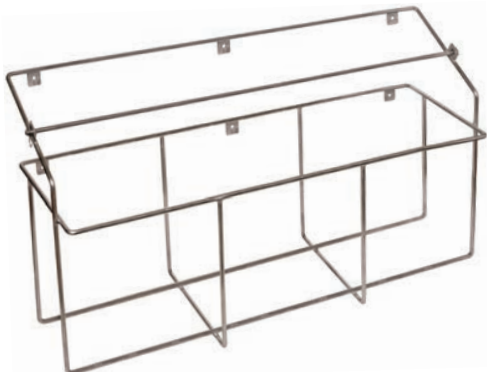
Keg Racks



A range of robust stainless steel wall mounted keg racks, complete with locking bar (holds 25-litre containers).

Specification
Single W320mm x D325mm x H600mm
Double W620mm x D325mm x H600mm
Triple W900mm x D325mm x H600mm

Description	Order Code
St/St Single Keg Rack	SKS02310
St/St Single Locking Bar (spare)	SKS02310/02
St/St Double Keg Rack	SKS02311
St/St Double Locking Bar (spare)	SKS02311/01
St/St Triple Keg Rack	SKS02315
St/St Triple Locking Bar (spare)	SKS02315/01
Brass Body/St/St Shackle Padlock	SKS02316



Hand Hygiene Dispensers

Cross infection by the transfer of pathogenic or food spoilage organisms via the hands is a significant problem in food production or food service. To reduce the incidence of cross contamination regular hand washing and hand sanitising is essential.

1	2	3	4
5	6		
7	8		
9			

Description		Order Code
1.	Hand Mousse Dispenser Delivers 0.8 ml per push	OPTE118
2.	Handsan Dispenser Delivers 0.8 ml per push	OPTE117
3.	Dermolsan Dispenser Delivers 2 ml per push	OPTE120
4.	Hand Soap Dispenser Delivers 2 ml per push	OPTE115
5.	Hand Care Dispenser Delivers 1 ml per push	OPTE119
6.	Autosan Dispenser Dispenser takes an Aquasan pouch Delivers 0.8 ml per push	OPTE122
7.	Foam Clenz Dispenser Dispenser takes a Foam Clenz pouch Delivers 0.8 ml per push	OPTE142
8.	Holsan Gel Dispenser Dispenser takes a Holsan Gel pouch Delivers 1.6 ml per push	OPTE143
9.	Pearl - Clenz Dispenser Dispenser takes a Pearl Clenz pouch Delivers 1.6 ml per push	OPTE144





Gateway House
Pilsworth Road
Pilsworth Industrial Estate
Bury
Greater Manchester
BL9 8RD

Telephone: 01706 238520

Email: engineeringsales@kersia-group.com
Web: www.kersia.uk